



Hager Companies offers a variety of surface door closers to meet a wide range of applications and uses. Heavy Duty, Grade 1 door closers are ideal for schools, hospitals, and other high-use environments while the Standard Duty, Grade 2 closer is ideal for less abusive commercial applications.

Surface door closers are easy to install, with only a few holes for the body and the arm, requiring a minimum amount of preparation of the door and frame. Not only are surface mounted door closers easier to install, they offer advantages with regard to adjustments that may need to be made because of variations in usage or environmental conditions.

There are a number of factors to consider when choosing how to mount your closer. These factors can be influenced by aesthetics, environment or application. The main things to consider when defining how to mount a surface door closer are:

- Appearance
- Accessibility to the closer arm
- Space limitations of the frame above the door
- Space limitations on the top rail of the door
- Closer position

There are three basic methods of mounting surface door closers to the door and frame and they are regular arm, parallel arm and top jamb mounts. All Hager Companies' door closers are supplied standard with a tri-pack for mounting any of the three types of applications.

Regular Arm

The regular arm application would be used when there is ample room on the top rail of the door and you are not concerned about the arm extending out away from the door. The closer body is mounted on the hinge side of the top rail of the door. The forearm is then mounted to the frame face by a mounting shoe.

The arm projects at approximately a 90° angle away from the door. The regular arm mount will make the closer more power-efficient than the parallel arm or top jamb mount.

Parallel Arm

The depth of the top rail is an important consideration when using this application. The closer body is mounted on the top rail of the door opposite the hinge side of the door. The forearm is mounted by a parallel arm bracket to the underside of the frame. The arm is parallel to the door, which makes it less likely to be damaged and aids in the overall aesthetics. This mounting application will, however, reduce the power-efficiency of the closer.

Top Jamb

This is the preferred method of mounting a closer if you are faced with a narrow rail on a door. The closer body is mounted to the frame face above the door, opposite the door hinge side. The forearm is then mounted to the top rail of the door. The top jamb mount is more power-efficient than the parallel arm application.

Door Handing

Hager Companies' surface door closers are all non-handed, meaning they can be placed on a door so that they will operate a left-opening or a right-opening door. Some of the accessories that can be ordered with these closers are handed and the hand of the door should be specified when ordering a closer with these components.

Closer Sizing

The American National Standards Institute (A.N.S.I.) has set the standard for sizing and ensured that each manufacturer's closers are tested on the same basis.

The accompanying chart shows the closer size required to fit your door size and application.

		Exterior (and Vestibule) Door Width				
		Minimum Door Width (24")				
		24"	30"	36"	42"	48"
		(610 mm)	(762 mm)	(914 mm)	(1067 mm)	(1219 mm)
Regular Arm & Top Jamb	Size 3 (0)	Size 4 (4cw)	Size 5 (8cw)	Size 6 (12cw)		
Parallel Arm	Size 3 (4cw)	Size 4 (8cw)	Size 5 (12cw)	-		

		Interior Door Width						
		Minimum Door Width (24")						
		24"	30"	34"	38"	48"	54"	60"
		(610 mm)	(762 mm)	(865 mm)	(965 mm)	(1219 mm)	(1372 mm)	(1524 mm)
Regular Arm & Top Jamb	Size 1 (8ccw)	Size 2 (4ccw)	Size 3 (0)	Size 4 (4cw)	Size 5 (8cw)	Size 6 (12cw)		
Parallel Arm	Size 1 (4ccw)	Size 2 (0)	Size 3 (4cw)	Size 4 (8cw)	Size 5 (12cw)	-		

Note: CW - Clockwise
CCW - Counter clockwise



Door Closers

General Information

Meeting ADA Requirements

Doors and doorways that are part of an accessible route shall comply with Section 404 of the ANSI 117.1 standard.

Doorways shall have a clear opening of 32" minimum. Clear opening of doorways with swinging doors shall be measured from the face of door and stop with the door open 90°.

Door closers shall be adjusted so that from the open position of 90°, the time required to move the door to an open position of 12° shall be 5 seconds minimum.

The maximum force for pushing open or pulling open doors other than fire doors shall be as follows:

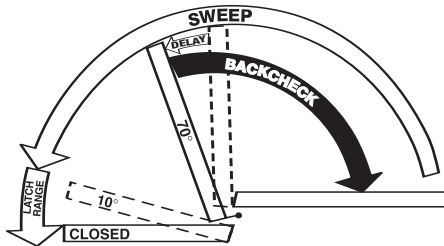
1. Interior hinged door: 5 lbs.
2. Exterior hinged door: 8.5 lbs.

Fire Doors

Fire doors shall have the minimum opening force allowable by the appropriate administrative authority.

Closer Adjustment

All Hager Companies' door closers are equipped with key control valves that allow for easy adjustments while decreasing the chances for tampering.



Sweep and Latching Speeds

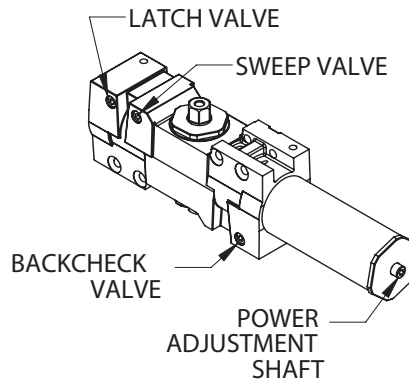
Two separate valves control the closing speed of the door. The sweep speed controls the speed of the door from full opening to within approximately 10" to 2" of the closed position. The latching speed valve controls the speed of the door from approximately 10" to 2" to full closing.

Backcheck

Backcheck starts at approximately 70° door opening and slows the door as it opens. This feature is not to be used as a positive stop. An auxiliary stop must be used.

Delayed Action

The delayed action feature is available for all applications. The closing time between 90° and 70° shall be a minimum of 20 seconds, but is adjustable to be even slower.



Adjustable Spring Feature

The 5100, 5200 and 5300 series closers offer an adjustable spring feature for sizing. Spring power of the closer can be increased by turning the power adjustment shaft clockwise.

Use of Door Stops

It is important to use an auxiliary door stop in order to protect the wall, trim, door and closer. A stop should be used even when a holder arm or closer with backcheck is used.

How to Select the Proper Closer

1. Size and Weight of Door

5100, 5200 and 5300 Closers are non-sized so that closing force can be adjusted in the field to accommodate various door sizes, weights and applications. Specify size when ordering 5400.

2. Interior Application

Where possible the standard Regular Arm application should be used as it is the most efficient in terms of power and control.

3. Exterior Application

Exterior doors require greater closing forces because of draft and wind conditions.

4. Degree of Opening

The closer should permit the door to open far enough to allow for easy traffic flow. The selection of the proper arm and position on the door are very important.

5. Function

Closers can be equipped with special arms that can serve many functions such as hold-open, positive stop or hold-open stop when necessary.

6. Abusive Environment

Closers can be equipped with Extra Heavy Duty arms that can withstand vandalism and extreme use.



HOW TO ORDER

5200	MLT	25	ALM	HD	SLC	RH	SX1G	BCK
	Mount MLT - MULTI-MOUNT PAR - PARALLEL ARM MOUNT		Finish ALM - Sprayed Aluminum BRZ - Sprayed Bronze DBZ - Sprayed Dark Bronze GOL - Sprayed Gold US3 - Bright Brass US4 - Satin Brass US26 - Bright Chrome US26D - Satin Chrome		Covers SLC - Slim line Cover FC - Full Cover MC - Metal Cover PC - Pinion Cap		Fastener Options SX1G - Sex bolts for 1 ³ / ₈ " door SX2 - Sex bolts for 2" door SX2D - Sex bolts for 2 ¹ / ₄ " door	
Product Group 5100 - Grade 1, CAST IRON, Grade 1 5200 - SLIM-BODY ALUMINUM, Grade 1 5300 - ALUMINUM, Grade 1 5400 - ALUMINUM, Grade 2		Size 02 - 2 Fixed (5400) 03 - 3 Fixed (5400) 04 - 4 Fixed (5400) 05 - 5 Fixed (5400) 25 - 2 Thru 5 Adj. (5200) 26 - 2 Thru 6 Adj. (5300 and 5100) 14 - 1 Thru 4 Adj. (5100, 5200, 5300) - ADA		Arm Options HD - Extra Heavy Duty Arm HO - Hold Open Arm HDS - Extra Heavy Duty Stop Arm HDHO - Extra Heavy Duty Hold Open Arm HDHOS - Extra Heavy Duty Hold Open Stop Arm LA - Long Arm		Handing RH - Right Hand LH - Left Hand		Miscellaneous BCK - Backcheck (5400 Option) DLY - Delayed Action



Door Closers

5100 Series



Grade 1

Heavy Duty Surface Door Closer

Ideal for schools, hospitals and other high-use environments

5100 Series

- Lifetime warranty
- Tri-pack mount - Standard
- Sex nuts and bolts - Standard

- Certifications:
- BHMA Certified ANSI A156.4, adjustable sizes 2 to 6 - Standard
 - ADA Compliant ANSI A117.1 Accessibility Code only for adjustable sizes 1 to 4 - Optional
 - UL/cUL Listed for up to 3 hours
 - UL10C Positive Pressure Rated
 - UL10B Neutral Pressure Rated

Material: • Cast Iron

- Cover:
- Full Plastic Cover - Standard
 - Plated Metal Cover - Optional

- Springs:
- One piece seamless steel spring tube
 - Double heat treated steel, tempered springs

- Valves:
- Adjustable latching and sweep speed valves
 - Adjustable backcheck valve
 - Delayed action valve - Optional
 - Staked valves - Standard

Handing: • Non-handed

Arms & Brackets: • Tri-Pack: Regular, Top Jamb and Parallel Arm Mount - Standard

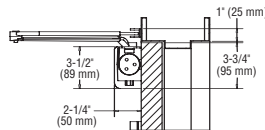
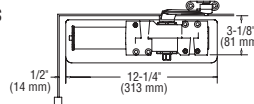
Door Thickness: • 1³/₄" (44 mm) - Standard
• 1³/₈" - 2¹/₄" thick door (36 mm - 57 mm) - Optional

Fasteners: • Self-reaming, self-tapping wood and machine screws
• Sex nuts and bolts

Finishes: • ALM, BRZ, DBZ, GOL, US3, US26, US26D

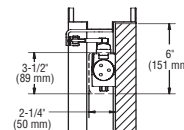
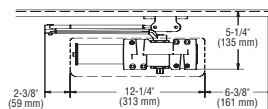
- Notes:
- Full rack and pinion operation
 - Precision machined, heat treated steel piston
 - Triple heat treated steel spindle

Arm Mounts



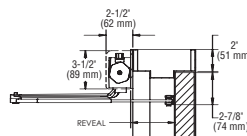
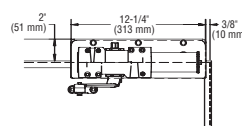
Regular Arm Mount

- Opening: • Templating allows up to 120°
- Hold-open: • Hold-open points 90° up to 120° with hold-open arm
- Frame face: • 1¹/₄" (32 mm) minimum
- Ceiling clearance: • 1¹/₄" (32 mm) minimum
- Top rail: • Less than 3³/₄" (95 mm) requires plate, 5109
• Plate requires 2" (51 mm) minimum
- Top rail clearance: • 4" (102 mm) from the top of door



Parallel Arm Mount

- Opening: • Templating allows up to 180°
- Hold-open: • Hold-open points 90° up to 180° with hold-open arm
- Top rail: • Standard hollow metal 5/8" frame stop
• Less than 5¹/₂" (140 mm) from the stop requires plate, 5110
• Plate requires 2" (51 mm) minimum from the stop
- Top rail clearance: • 6¹/₄" (159 mm) from the top of door

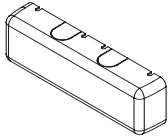


Top Jamb Mount

- Opening: • Templating allows up to 120°
- Hold-open: • Hold-open points 85° up to 120° with hold-open arm
- Frame face: • Less than 3¹/₂" (89 mm) requires drop plate, 5115
- Ceiling clearance: • Plate requires 4" (102 mm) minimum
- Top rail: • Requires 1³/₈" (35 mm) minimum
- Top rail clearance: • 1¹/₂" (38 mm) from the top of the door

Notes: Right Hand Door - RH
Left Hand Reverse - LHR

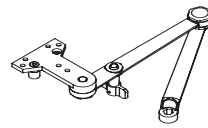
Left Hand Door - LH
Right Hand Reverse - RHR



Plastic Cover

5102

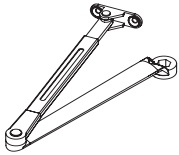
- High impact non-corrosive full cover
- Cover projects 2 1/4" (56 mm) from door face
- Secured by two machine screws



Extra Heavy Duty Hold-Open Stop Arm

5960

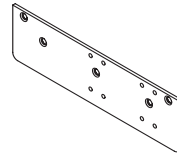
- Non-handed parallel arm
- Hold open function
- Cast steel
- Auxiliary stop in soffit shoe
- Plunger hold open



Main Arm

5103

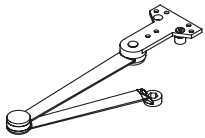
- Non-handed
- Forged steel
- Mounts regular, top jamb or parallel arm mount



Drop Plate – Regular Arm Mount

5109

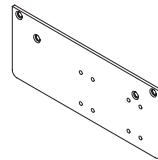
- Required for hinge side mount when top rail is less than 3 3/4"
- Plate requires 2" minimum top rail



Extra Heavy Duty Stop Arm

5105

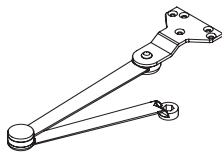
- Non-handed parallel arm
- Cast steel
- Auxiliary stop in soffit shoe



Drop Plate – Parallel Arm Mount

5110

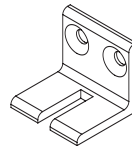
- Required for parallel arm mount when top rail is less than 5 1/2", measured from the stop
- Plate requires 2 1/2" minimum top rail



Extra Heavy Duty Arm

5106

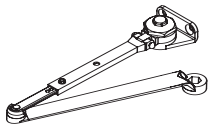
- Non-handed parallel arm
- Cast steel



Extra Heavy Duty Parallel Arm Support

5111

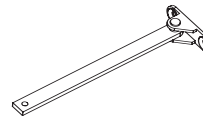
- For use with stop arms when reveal is less than 3 1/16"
- Provides anchor for fifth screw



Standard Hold-Open Arm

5107

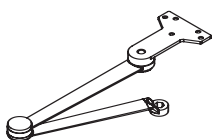
- Non-handed
- Forged steel
- Mounts pull side or top jamb with shallow reveal
- Friction hold open
- For use with 5909 bracket for parallel arm mount



Long Rod and Shoe

5112

- Non-handed
- Cast steel
- Use for top jamb application
- Use for reveals greater than 3" and up to 5"



Extra Heavy Duty Hold-Open

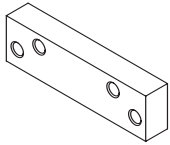
5108

- Handed parallel arm
- Cast steel
- Provides hold-open function
- Adjustable at the shoe
- Friction hold open



Door Closers

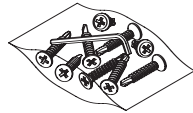
5100 Series Accessories



Blade Stop Spacer

5113

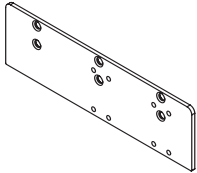
- Required to lower parallel arm shoe to clear 1/2" blade stop for aluminum frames



Standard Screw Pack

5104

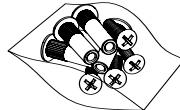
- Self-drilling wood screws
- Self-drilling machine screws



Drop Plate - Low Clearance

5114

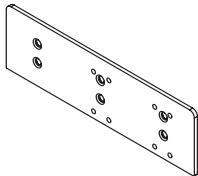
- For use when ceiling clearance prevents normal top jamb mounting
- For use when overhead door holder prevents normal top jamb mounting



SNB Screw Pack

5940

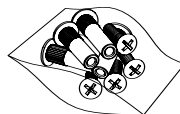
- Sex nuts and bolts for 1 3/4" doors
- Machine screws
- For use with 5100 series closer only



Drop Plate - Top Jamb Mount

5115

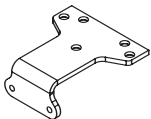
- Required for top jamb when frame face is less than 3 1/2" (89 mm)
- Plate requires 1 3/4" minimum frame face
- For use with plastic cover



SNB Screw Pack

5941

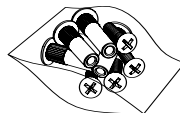
- Sex nuts and bolts for 1 3/8" doors
- Machine screws
- For use with 5100 series closer only



Parallel Arm Bracket

5909

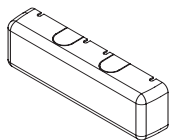
- Supplied standard
- Supplied with standard hold open closer
- Can be used to convert regular or top jamb arm to parallel arm application



SNB Screw Pack

5942

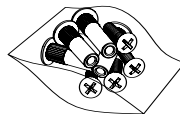
- Sex nuts and bolts for 2" doors
- Machine screws
- For use with 5100 series closer only



Metal Cover

5962

- Cast zinc
- Cover projects 2 1/4" (56 mm) from door face
- Secured by two machine screws



SNB Screw Pack

5943

- Sex nuts and bolts for 2 1/4" doors
- Machine screws
- For use with 5100 series closer only



**Grade 1
Heavy Duty Surface Door Closer**
Ideal for schools, hospitals and other high-use environments

5200 Series

- Lifetime warranty
- Tri-pack mount - Standard
- Sex nuts and bolts - Standard

- Certifications:
- BHMA Certified ANSI A156.4, adjustable sizes 2 to 5 - Standard
 - ADA Compliant ANSI A117.1 Accessibility Code only for adjustable sizes 1 to 4 - Optional
 - UL/cUL Listed for up to 3 hours
 - UL10C Positive Pressure Rated
 - UL10B Neutral Pressure Rated

Material: • Aluminum alloy

- Cover:
- Full Plastic Cover - Standard
 - Slim Line Plastic Cover - Optional
 - Full Size Plated Metal Cover - Optional

Springs: • Double heat treated steel, tempered springs

- Valves:
- Adjustable latching and sweep speed valves
 - Adjustable backcheck valve
 - Delayed action valve - Optional
 - Staked valves - Standard

Handing: • Non-handed

- Arms & Brackets:
- Tri-Pack: Regular, Top Jamb and Parallel Arm Mount - Standard
 - 15% power adjustment in arm

- Door Thickness:
- 1³/₄" (44 mm)
 - 1³/₈" - 2¹/₄" (36 mm - 57 mm) - Optional

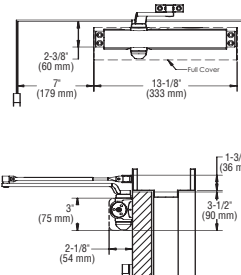
- Fasteners:
- Self-reaming, self-tapping wood and machine screws
 - Sex nuts and bolts

Finishes: • ALM, BRZ, DBZ, GOL, US3, US26, US26D

- Notes:
- Full rack and pinion operation
 - Precision machined, heat treated steel piston
 - Triple heat treated steel spindle

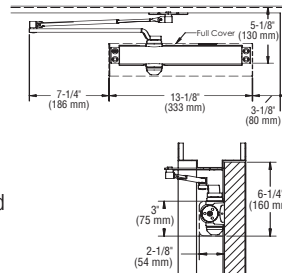
Arm Mounts

Regular Arm Mount



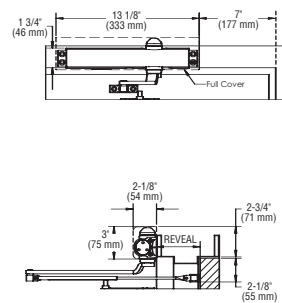
- Opening: • Templating allows up to 180°
- Hold-open: • Hold-open points 90° up to 180° with hold-open arm
- Frame face: • 1³/₈" (35 mm)
- Ceiling clearance: • 1³/₄" (45 mm) minimum
• 1⁵/₈" (41 mm) minimum for hold-open arm
- Top rail: • 2¹/₂" (64 mm) minimum without drop plate
• 1⁵/₈" (38 mm) minimum with plate, 5918
- Top Rail Clearance: • 3¹/₂" (89 mm) minimum

Parallel Arm Mount



- Opening: • Templating allows up to 180°
- Hold-open: • Hold-open points 90° up to 180° with hold-open
- Top rail: • Standard hollow metal 5/8" frame stop
• 5³/₈" (137 mm) minimum
- Top rail clearance: • 6¹/₄" (159 mm) minimum

Top Jamb Mount



- Opening: • Templating allows up to 180°
- Hold-open: • Hold-open points 90° up to 180° with hold-open
- Frame face: • 1⁷/₈" (48 mm) minimum
• 1¹/₈" (29 mm) minimum with plate, 5918
- Ceiling clearance: • 2³/₄" (70 mm) minimum
• 1⁵/₈" (41 mm) minimum with plate, 5918
- Top rail: • 2" (51 mm) minimum
- Top rail clearance: • 2¹/₄" (57 mm) minimum
• 2¹/₂" (64 mm) minimum for hold-open
• 3³/₈" (86 mm) minimum with plate, 5918
• 3⁵/₈" (92 mm) minimum for hold-open with plate

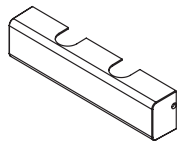
Notes: Right Hand Door - RH
Left Hand Reverse - LHR

Left Hand Door - LH
Right Hand Reverse - RHR



Door Closers

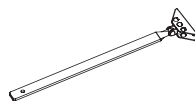
5200 Series



Full Plastic Cover

5202

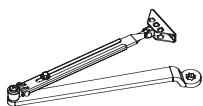
- High impact non-corrosive full cover
- Cover projects 2³/₁₆" (56 mm) from door face
- Secured by 2 machine screws



Long Rod and Shoe

5908

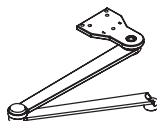
- Non-handed
- Cast steel
- Use for top jamb application
- Use for reveals greater than 4" and up to 8"



Main Arm

5203

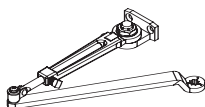
- Non-handed
- Forged steel
- Mounts regular, top jamb or parallel arm mount



Extra Heavy Duty Arm

5911

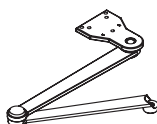
- Non-handed parallel arm
- Forged steel



Standard Hold-Open Arm

5207

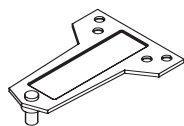
- Non-handed
- Forged steel
- Mounts pull side or top jamb with shallow reveal
- Friction hold open
- For use with 5914 bracket for parallel arm mount



Extra Heavy Duty Hold-Open

5912

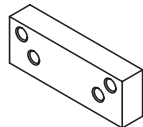
- Handed parallel arm
- Forged steel
- Provides hold-open function
- Adjustable at the shoe
- Friction hold open



Parallel Arm Bracket

5900

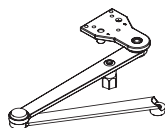
- Supplied standard with multimount closers
- Can be used to convert regular or top jamb arms to parallel arm application



Blade Stop Spacer

5913

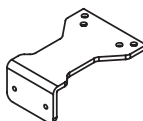
- Required to lower parallel arm shoe to clear 1/2" blade stop for aluminum frames



Extra Heavy Duty Hold-Open Stop Arm

5906

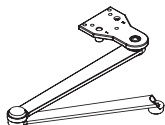
- Non-handed parallel arm
- Hold-open function
- Forged steel
- Auxiliary stop in soffit shoe
- Plunger hold open



Hold-Open Parallel Arm Bracket

5914

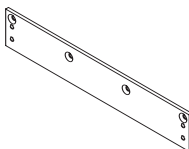
- Supplied with all standard hold-open closers
- Can be used to convert regular arm or top jamb arm hold-open arms to parallel arm



Extra Heavy Duty Stop Arm

5907

- Non-handed parallel arm
- Auxiliary stop in soffit shoe
- Forged steel



Drop Plate - Top Jamb, Narrow Top Rail

5918

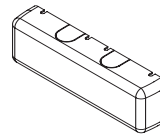
- For use with slimline cover
- For use when a narrow top rail prevents mounting directly to door surface
- For use when low ceiling clearance prevents normal top jamb mounting



Pinion Cap

5919

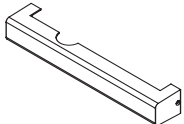
- High-impact, non-corrosive
- Fits over the pinion and extends 9/16" (14 mm)



Metal Cover

5932

- Cast zinc
- Cover projects 2 1/4" (57 mm) from door face
- Secured by two machine screws



Slim Line Plastic Cover

5920

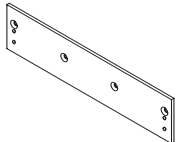
- High-impact non-corrosive
- Cover projects 2 3/16" (56 mm) from the door face
- Secured by 2 machine screws
- Available in plastic only



Standard Screw Pack

5204

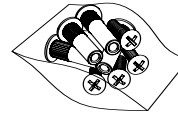
- Self-drilling wood screws
- Self-drilling machine screws



Drop Plate - Narrow Top Rail

5921

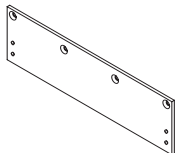
- For use with a full cover
- For use when a narrow top rail prevents mounting directly to door surface



SNB Screw Pack

5902

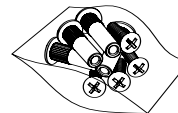
- Sex nuts and bolts for 1 3/4" doors
- Machine screws
- For use with 5200, 5300, 5400 series closers only



Drop Plate - Top Jamb, Parallel Arm

5922

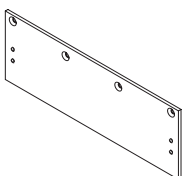
- For use with parallel arm mount and no cover or slim line cover
- For use when low ceiling clearance prevents normal top jamb mounting; with full cover
- For use when an overhead door holder prevents normal top jamb mounting



SNB Screw Pack

5903

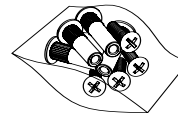
- Sex nuts and bolts for 1 3/8" doors
- Machine screws
- For use with 5200, 5300, 5400 series closers only



Drop Plate - Parallel Arm

5923

- For use with a full cover
- For use with a parallel arm when narrow top rail prevents mounting directly to the door surface



SNB Screw Pack

5904

- Sex nuts and bolts for 2" doors
- Machine screws
- For use with 5200, 5300, 5400 series closers only



SNB Screw Pack

5905

- Sex nuts and bolts for 2 1/4" doors
- Machine screws
- For use with 5200, 5300, 5400 series closers only



Door Closers

5300 Series



Grade 1
Heavy Duty Surface Door Closer
 Ideal for schools, hospitals and other high-use environments

5300 Series

- Lifetime warranty
- Tri-pack mount - Standard
- Sex nuts and bolts - Standard

- Certifications:
- BHMA Certified ANSI A156.4, adjustable sizes 2 to 6 - Standard
 - ADA Compliant ANSI A117.1 Accessibility Code only for adjustable sizes 1 to 4 - Optional
 - UL/cUL Listed for up to 3 hours
 - UL10C Positive Pressure Rated
 - UL10B Neutral Pressure Rated

Material: • Aluminum Alloy

Cover: • Full plastic cover and pinion cap

Springs: • Double heat treated steel, tempered springs

Valves: • Adjustable latching and sweep speed valves
 • Adjustable backcheck valve
 • Delayed action valve - Optional
 • Staked valves - Standard

Handing: • Non-handed

Arms & Brackets: • Tri-Pack: Regular, Top Jamb and Parallel Arm Mount - Standard
 • 15% power adjustment in arm

Door Thickness: • 1³/₄" (44 mm)
 • 1³/₈" - 2¹/₄" (36 mm - 57 mm) Optional

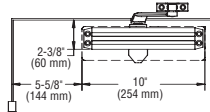
Fasteners: • Self-reaming, self-tapping wood and machine screws
 • Sex nuts and bolts

Finishes: • ALM, BRZ, DBZ, GOL

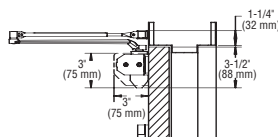
Notes: • Full rack and pinion operation
 • Precision machined, heat treated steel piston
 • Triple heat treated steel spindle

Arm Mounts

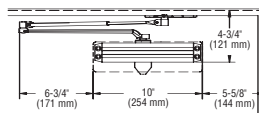
Regular Arm Mount



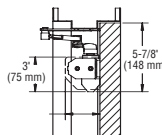
- Opening: • Templating allows up to 180°
- Hold-open: • Hold-open points 90° up to 180° with hold-open arm
- Frame face: • 1³/₈" (35 mm) minimum
- Ceiling clearance: • 1⁵/₈" (41 mm) minimum
 • 1⁵/₈" (41 mm) minimum for hold-open arm
- Top rail: • 2¹/₂" (64 mm) minimum with drop plate, 5915
- Top rail clearance: • 4¹/₄" (108 mm) minimum from the top of the door



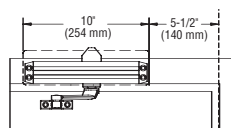
Parallel Arm Mount



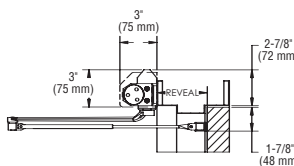
- Opening: • Templating allows up to 180°
- Hold-open: • Hold-open points 90° up to 180° with hold-open
- Top rail: • Standard hollow metal 5/8" frame stop
 • 4³/₄" (121 mm) minimum
 • 4" (102 mm) minimum with hold-open
 • 3¹/₈" (79 mm) minimum with plate
 • 2¹/₈" (54 mm) minimum with hold-open and plate
- Top rail clearance: • 5³/₄" (146 mm) minimum from the top of the door



Top Jamb Mount



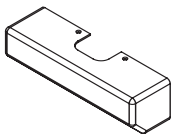
- Opening: • Templating allows up to 180°
- Hold-open: • Hold-open points 90° up to 180° with hold-open
- Frame face: • 1³/₄" (45 mm) minimum
- Ceiling clearance: • 2³/₄" (70 mm) minimum
 • 1³/₄" (44 mm) minimum with plate, 5918
- Top rail: • 1⁷/₈" (48 mm) minimum
- Top rail clearance: • 2¹/₈" (54 mm) minimum
 • 2³/₄" (70 mm) minimum with plate, 5917
 • 2¹/₄" (57 mm) minimum for hold-open with plate, 5917
 • 3⁵/₈" (92 mm) minimum with plate, 5915



Notes: Right Hand Door - RH
 Left Hand Reverse - LHR

Left Hand Door - LH
 Right Hand Reverse - RHR

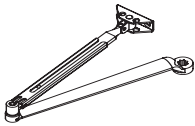




Full Plastic Cover

5302

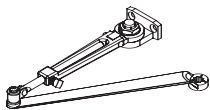
- High impact non-corrosive full cover - Standard
- Cover projects 2⁹/₁₆" (56 mm) from door face
- Secured by 2 machine screws
- Available in plastic only



Main Arm

5303

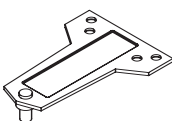
- Non-handed
- Forged steel
- Mounts regular, top jamb or parallel arm mount
- For use with 5900 bracket for parallel arm mount



Standard Hold-Open Arm Assembly

5307

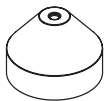
- Non-handed
- Forged steel
- Mounts pull side or top jamb with shallow reveal
- Friction hold open
- For use with 5914 bracket for parallel arm mount



Parallel Arm Bracket

5900

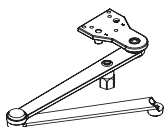
- Supplied standard with multimount closers
- Can be used to convert regular or top jamb arms to parallel arm application



Pinion Cap

5901

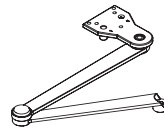
- Supplied standard
- High-impact, non-corrosive
- Fits over the pinion and extends 1" (25.4 mm)



Extra Heavy Duty Hold-Open Stop Arm

5906

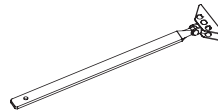
- Non-handed parallel arm
- Hold-open function
- Forged steel
- Auxiliary stop in soffit shoe
- Plunger hold open



Extra Heavy Duty Stop Arm

5907

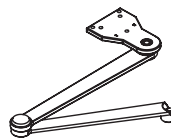
- Non-handed parallel arm
- Auxiliary stop in soffit shoe
- For use in abusive environments



Long Rod and Shoe

5908

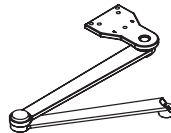
- Non-handed
- Cast steel
- Use for top jamb application
- Use for reveals greater than 4" and up to 8"



Extra Heavy Duty Arm Assembly

5911

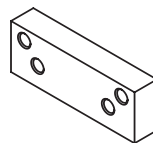
- Non-handed parallel arm
- Cast steel
- For use in abusive environments



Extra Heavy Duty Hold-Open Arm Assembly (Left/Right)

5912

- Handed parallel arm
- Cast steel
- Provides hold-open function
- Adjustable at the shoe
- Friction hold open



Blade Stop Spacer

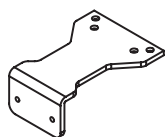
5913

- Required to lower parallel arm shoe to clear 1/2" blade stop for aluminum frames



Door Closers

5300 Series Accessories



Hold-Open Parallel Arm Bracket

5914

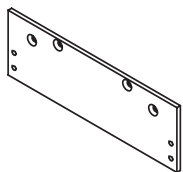
- Supplied with all standard hold-open closers
- Used to convert 5307 hold-open arms to parallel arm



Standard Screw Pack

5304

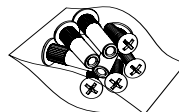
- Self-drilling wood screws
- Self-drilling machine screws



Drop Plate - Narrow Rail Overhead Holder

5915

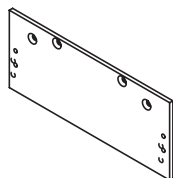
- For use when an overhead door holder prevents normal top jamb mounting
- For use when a narrow rail prevents the closer from being mounted directly to the door
- For use with parallel arm and no cover
- For use when low ceiling clearance prevents normal top jamb mounting



SNB Screw Pack

5902

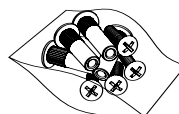
- Sex nuts and bolts for 1³/₄" doors
- Machine screws
- For use with 5200, 5300, 5400 series closers only



Drop Plate - Narrow Rail Parallel Arm

5916

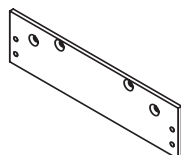
- For use when a narrow rail prevents the closer from being mounted directly to the door
- For use with parallel arm and full plastic cover



SNB Screw Pack

5903

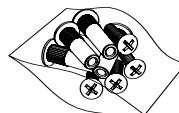
- Sex nuts and bolts for 1³/₈" doors
- Machine screws
- For use with 5200, 5300, 5400 series closers only



Drop Plate - Top Jamb, Low Clearance

5917

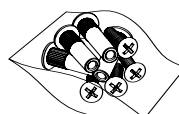
- For use when ceiling clearance is between 1³/₄" (44 mm) and 2⁵/₈" (67 mm)
- For use when an overhead door holder prevents normal top jamb mounting
- For use with no cover



SNB Screw Pack

5904

- Sex nuts and bolts for 2" doors
- Machine screws
- For use with 5200, 5300, 5400 series closers only



SNB Screw Pack

5905

- Sex nuts and bolts for 2¹/₄" doors
- Machine screws
- For use with 5200, 5300, 5400 series closers only



**Grade 2
Standard Duty Surface Door Closer**
Ideal for light duty commercial applications

5400 Series

- One-year warranty
- Tri-pack mount - Standard
- Sex nuts and bolts - Standard

- Certifications:
- BHMA Certified ANSI A156.4, Sizes 2, 3, 4, 5 - Must specify
 - UL/cUL Listed for up to 3 hours
 - UL10C Positive Pressure Rated
 - UL10B Neutral Pressure Rated

Material: • Aluminum Alloy

Cover: • Pinion cap

Springs: • Double heat treated steel, tempered springs

Valves: • Adjustable latching and sweep speed valves
• Adjustable backcheck valve - Optional
• Staked valves - Standard

Handing: • Non-handed

Arms & Brackets: • Tri-Pack: Regular, Top Jamb and Parallel Arm Mount - Standard
• 15% power adjustment in arm

Door Thickness: • 1³/₄" (44 mm) - Standard
• 1³/₈" - 2¹/₄" (36 mm - 57 mm) - Optional

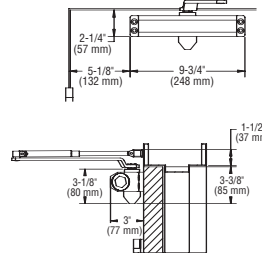
Fasteners: • Self-reaming, self-tapping wood and machine screws
• Sex nuts and bolts

Finishes: • ALM, BRZ, DBZ, GOL

Notes: • Precision machined, heat treated steel piston
• Triple heat treated steel spindle

Arm Mounts

Regular Arm Mount



Opening: • Templating allows up to 180°

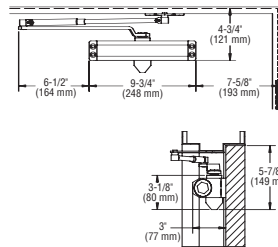
Frame face: • 1¹/₂" (38 mm) minimum

Ceiling clearance: • 1³/₄" (44 mm) minimum

Top rail: • 2¹/₄" (57 mm) minimum

Top rail clearance: • 3¹/₂" (89 mm) minimum

Parallel Arm Mount

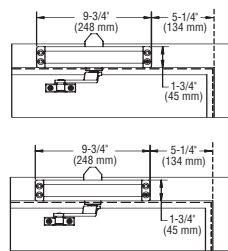


Opening: • Templating allows up to 180°

Top rail: • 5/8" frame stop
• 4³/₄" (121 mm) minimum

Top rail clearance: • 5³/₄" (146 mm) minimum

Top Jamb Mount



Opening: • Templating allows up to 180°

Frame face: • 1³/₄" (45 mm) minimum

Ceiling clearance: • 2³/₄" (70 mm) minimum

Top rail: • 1⁷/₈" (48 mm) minimum

Top rail clearance: • 2¹/₈" (54 mm) minimum

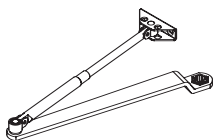
Notes: Right Hand Door - RH
Left Hand Reverse - LHR

Left Hand Door - LH
Right Hand Reverse - RHR



Door Closers

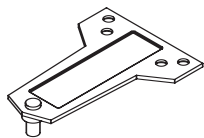
5400 Series Accessories



Main Arm

5403

- Non-handed
- Punched steel
- Mounts regular, top jamb or parallel arm mount
- For use with 5900 bracket for parallel arm mount



Parallel Arm Bracket

5900

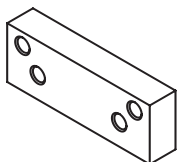
- Supplied standard with multimount closers
- Can be used to convert regular or top jamb arms to parallel arm application



Pinion Cap

5901

- Supplied standard
- High-impact, non-corrosive
- Fits over the pinion and extends 1" (25.4 mm)



Blade Stop Spacer

5913

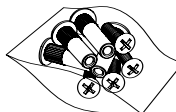
- Required to lower parallel arm shoe to clear 1/2" blade stop for aluminum frames



Standard Screw Pack

5404

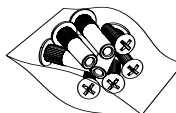
- Self-drilling wood screws
- Self-drilling machine screws



SNB Screw Pack

5902

- Sex nuts and bolts for 1³/₄" doors
- Machine screws
- For use with 5200, 5300, 5400 series closers only



SNB Screw Pack

5903

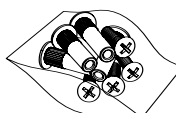
- Sex nuts and bolts for 1³/₈" doors
- Machine screws
- For use with 5200, 5300, 5400 series closers only



SNB Screw Pack

5904

- Sex nuts and bolts for 2" doors
- Machine screws
- For use with 5200, 5300, 5400 series closers only



SNB Screw Pack

5905

- Sex nuts and bolts for 2¹/₄" doors
- Machine screws
- For use with 5200, 5300, 5400 series closers only