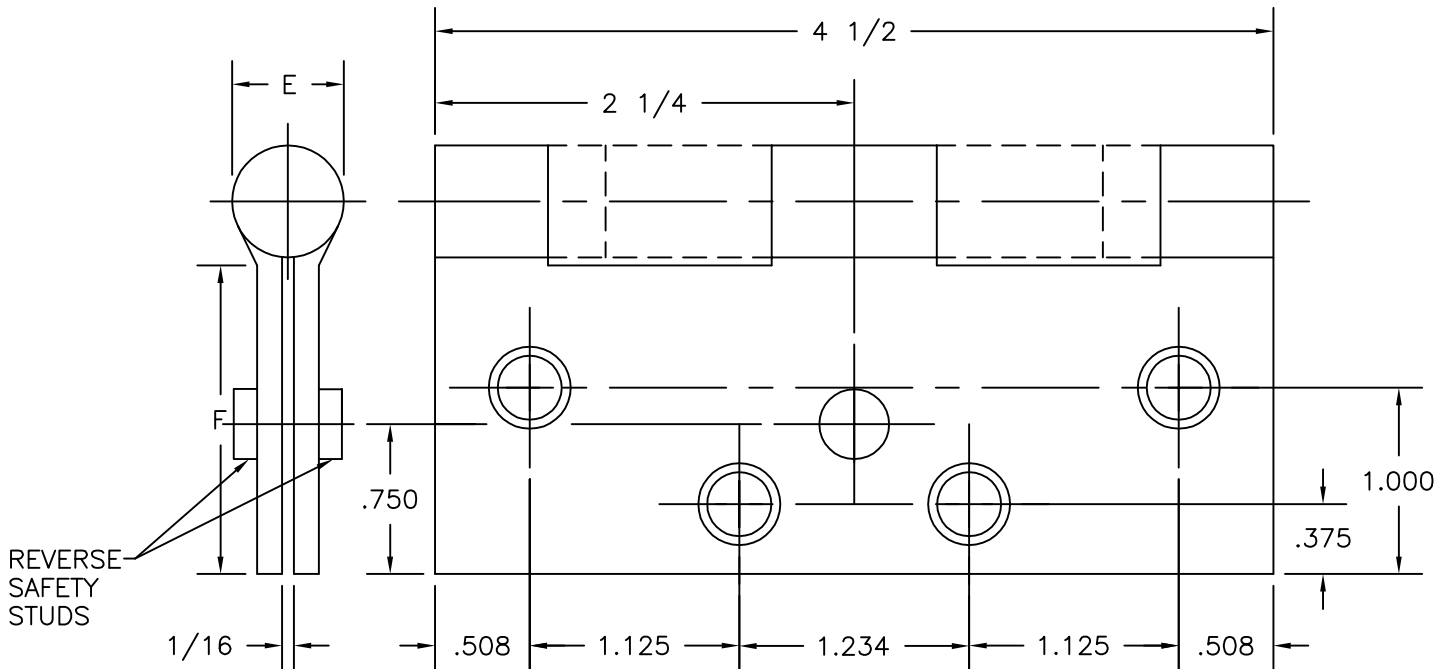


FULL MORTISE  
REVERSE SAFETY STUD  
TEMPLATE HINGES

Template No. T312

REV. NO.	REVISIONS	BY	DATE
2	ECO CT05083	RAM	12-14-05

SIZES: 4 1/2 x 4, 4 1/2 x 4 1/2, 4 1/2 x 5, 4 1/2 x 6,  
4 1/2 x 7, 4 1/2 x 8



-DO NOT SCALE-

DRILLING INSTRUCTIONS

RECOMMEND  $\phi$  5/8" HOLES IN JAMB  
AND DOOR REINFORCEMENTS FOR  
CLEARANCE OF REVERSE SAFETY STUD.

CATALOG NUMBER		METAL GAUGE	(E) KNUCKLE DIAMETER	(F) DISTANCE FROM EDGE OF LEAF TO SWAGE LINE					
STEEL HINGES	NON-FERROUS HINGES			4 1/2 x 4	4 1/2 x 4 1/2	4 1/2 x 5	4 1/2 x 6	4 1/2 x 7	4 1/2 x 8
700	800	.134	39/64	1 5/8	1 7/8	---	---	---	---
1279	1191	.134	39/64	1 5/8	1 7/8	2 1/8	2 5/8	3 1/8	3 5/8
AB700	AB800	.134	39/64	1 5/8	1 7/8	---	---	---	---
BB1174	BB1193	.134	39/64	1 3/8	1 5/8	---	---	---	---
BB1279	BB1191	.134	39/64	1 5/8	1 7/8	2 1/8	2 5/8	3 1/8	3 5/8
AB750	AB850	.180	45/64	1 9/16	1 13/16	2 1/16	2 9/16	3 1/16	3 9/16
BB1168	BB1199	.180	45/64	1 9/16	1 13/16	2 1/16	2 9/16	3 1/16	3 9/16

ALL DIMENSIONS ARE IN INCHES.

Machine Screw Size- 12-24 x 1/2" F.H.  
Wood Screw Size- No. 12 x 1 1/4" F.H.



Hospital type and round corner template hinges conform to the above screw size and location. They are designated by "HT" and "RC" to catalog number.

Hager template hinges are made in size, gauge and with screw holes located to conform to ANSI-A156.7.

HAGER RESERVES THE RIGHT TO MAKE  
DESIGN CHANGES WITHOUT NOTICE. CALL  
HAGER ENGINEERING AT 1-800-325-9995  
FOR LATEST REVISION DATE OF TEMPLATE.

HAGER COMPANIES  
139 VICTOR STREET  
P.O. BOX 12300  
ST. LOUIS, MISSOURI 63157-0300