



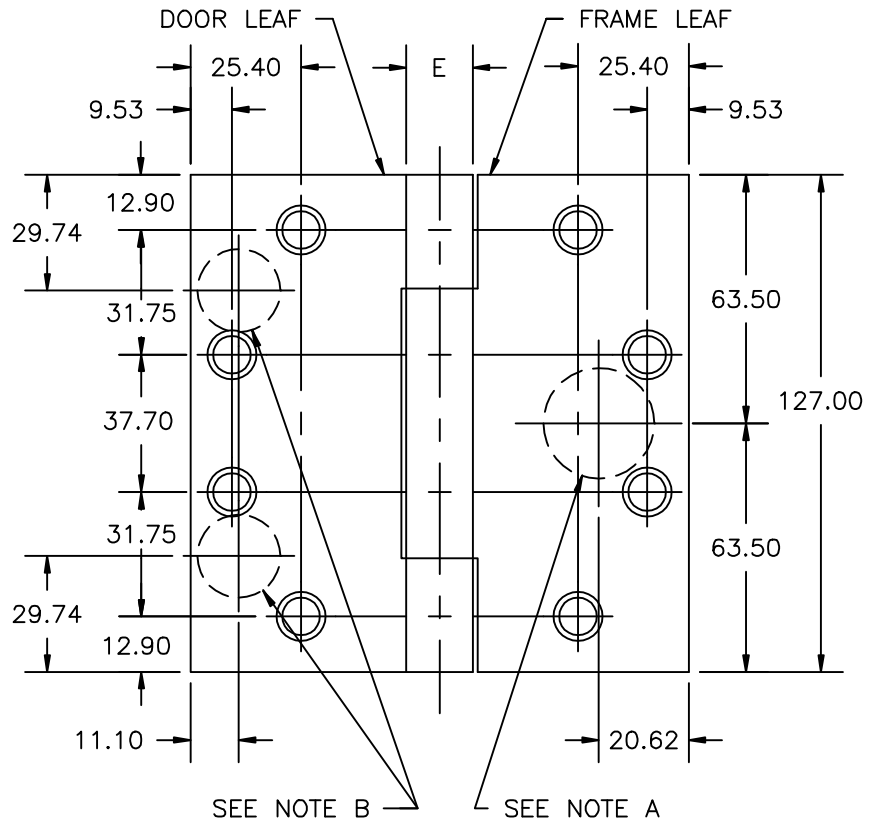
TRICOM – FULL MORTISE
 TEMPLATE HINGES
 ELECTRIC THROUGH WIRE
 AND MONITOR TYPE ETM

Template No. T529M

No.	REVISION	BY	DATE
1	ECO CT05035	RAM	8-15-05

SIZES: 127.00 x 101.60, 127.00 x 114.30, 127.00 x 127.00

ETM MAXIMUM ELECTRICAL RATING SWITCH	
VOLTS	30V DC
AMPERES	.500A
CONTACT THROUGH WIRE	
VOLTS	48V DC
AMPERES	3.5A CONTINUOUS CURRENT 16.0A CURRENT INRUSH (300 MILLISECONDS)



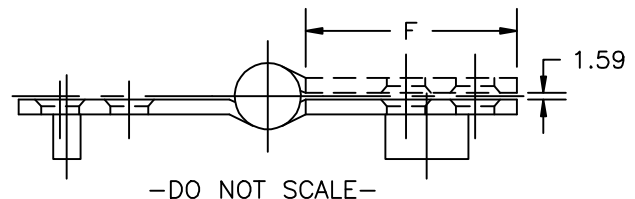
DRILLING INSTRUCTIONS

NOTE A:

DRILL AND DEBURR ϕ 25.40 mm HOLE IN FRAME REINFORCEMENT FOR THROUGH WIRES.

NOTE B:

- NON-HANDED INSTALLATION—DRILL AND DEBURR TWO (2) 19.05 mm HOLES IN DOOR REINFORCEMENT PLATE FOR THROUGH WIRES.
- RIGHT HAND INSTALLATION—DRILL AND DEBURR ϕ 19.05 mm HOLE FOR THROUGH WIRES IN DOOR REINFORCEMENT PLATE ON BOTTOM LEFT.
- LEFT HAND INSTALLATION—DRILL AND DEBURR ϕ 19.05 mm HOLE FOR THROUGH WIRES IN DOOR REINFORCEMENT PLATE ON UPPER RIGHT.



-DO NOT SCALE-

CATALOG NUMBER				(F) DISTANCE FROM EDGE OF LEAF TO SWAGE LINE		
STEEL HINGES	NON-FERROUS HINGES	METAL GAUGE	(E) KNUCKLE DIAMETER	127.00 x 101.60	127.00 x 114.30	127.00 x 127.00
AB700-ETM	AB800-ETM	3.68	15.88	41.28	47.63	53.98
AB750-ETM	AB850-ETM	4.83	18.65	39.69	46.04	52.39

ALL DIMENSIONS ARE IN MILLIMETERS.

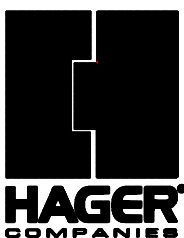
Machine Screw Size— 12-24 x 1/2" F.H.

Wood Screw Size— No. 12 x 1 1/4" F.H.

NOTE: This hinge is intended to be used in the center position.

Hospital type and round corner template hinges conform to the above screw size and location. They are designated by "HT" and "RC" to catalog number.

Hager template hinges are made in size, gauge and with screw holes located to conform to ANSI-A156.7.



HAGER RESERVES THE RIGHT TO MAKE DESIGN CHANGES WITHOUT NOTICE. CALL HAGER ENGINEERING AT 1-800-325-9995 FOR LATEST REVISION DATE OF TEMPLATE.

HAGER COMPANIES
 139 VICTOR STREET
 P.O. BOX 12300
 ST. LOUIS, MISSOURI 63157-0300