

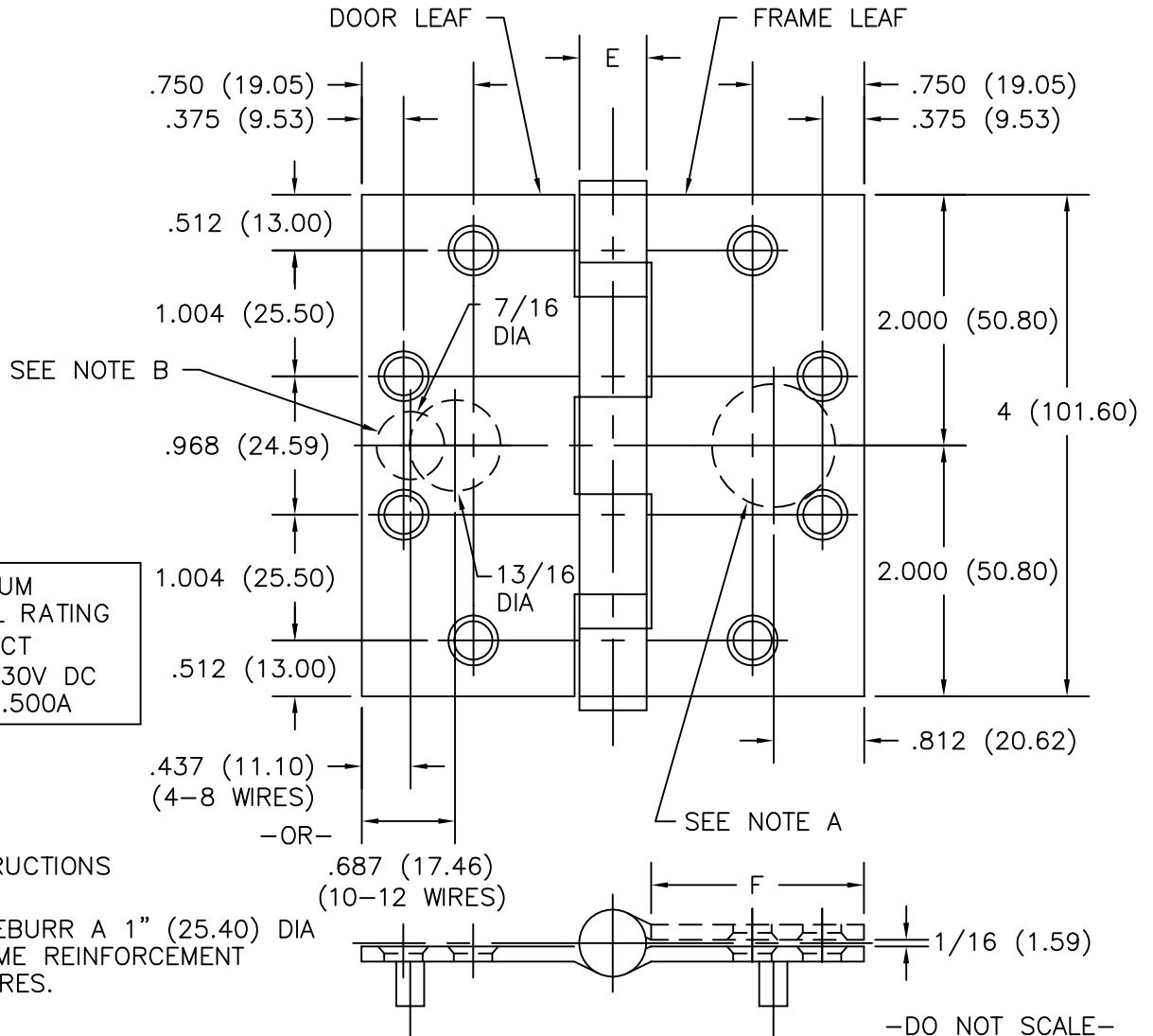


FULL MORTISE
ELECTRIC THRU WIRE
TYPE ETW TEMPLATE HINGES

Template No. T541

| No. | REVISION | BY | DATE |
|-----|-------------|-----|---------|
| 1 | ECO CT05035 | RAM | 8-15-05 |
| 2 | ECO CT07016 | DW | 4.12.07 |

SIZES: 4 x 4
(101.60 x 101.60)



MAXIMUM
ELECTRICAL RATING
CONTACT
VOLTS: 30V DC
AMPERES: .500A

DRILLING INSTRUCTIONS

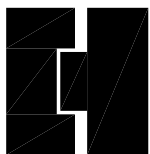
NOTE A:
DRILL AND DEBURR A 1" (25.40) DIA
HOLE IN FRAME REINFORCEMENT
FOR THRU WIRES.

NOTE B:
DRILL AND DEBURR A 7/16" (11.10) DIA HOLE FOR 4-8 THRU WIRES -OR-
A 13/16" (20.64) DIA HOLE FOR 10-12 THRU WIRES IN DOOR REINFORCEMENT.

| CATALOG NUMBER | | METAL GAUGE | (E) KNUCKLE DIAMETER | (F) DISTANCE FROM EDGE OF LEAF TO SWAGE LINE |
|-----------------|---------------------------|-------------|----------------------------|---|
| STEEL HINGES | NON- FERROUS HINGES | | | 4 x 4 (101.60 x 101.60) |
| BB1279-ETW | BB1191-ETW | .129 (3.28) | 35/64 (13.89) | 1 5/8 (41.28) |

ALL NON-BRACKETED DIMENSIONS ARE IN INCHES, ALL BRACKETED DIMENSIONS ARE IN MILLIMETERS.

Machine Screw Size- 12-24 x 1/2" F.H.
Wood Screw Size- No. 12 x 1 1/4" F.H.



HAGER®

NOTE: This hinge is intended to be used in the center position.

Hager template hinges are made in size, gauge and with screw holes located to conform to ANSI-A156.7.

HAGER RESERVES THE RIGHT TO MAKE
DESIGN CHANGES WITHOUT NOTICE. CALL
HAGER ENGINEERING AT 1-800-325-9995
FOR LATEST REVISION DATE OF TEMPLATE.

HAGER HINGE CO.
139 Victor St.
St. Louis, MO 63104