



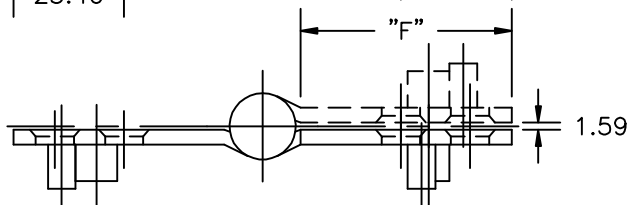
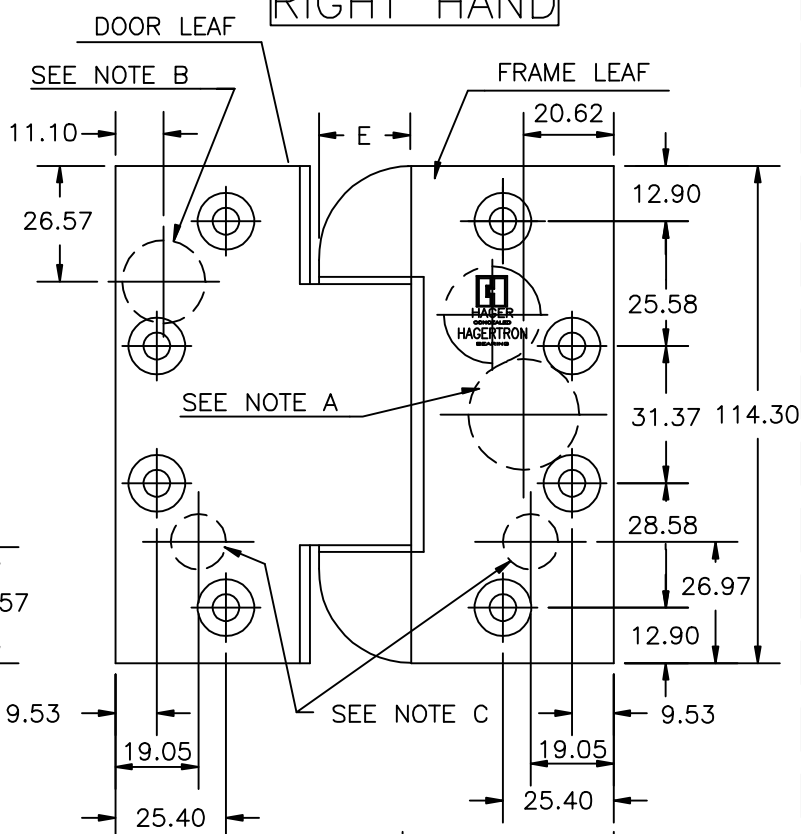
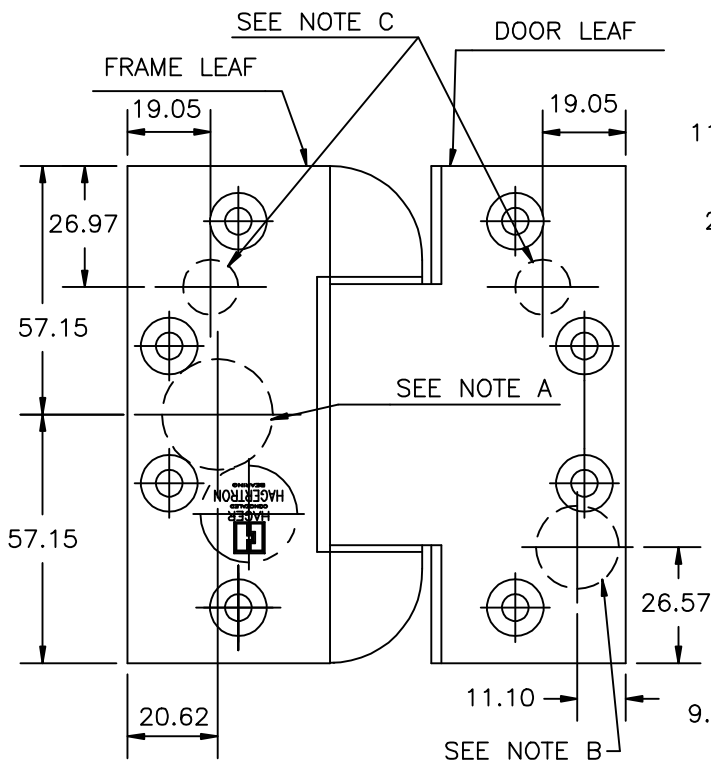
SPECIAL HEAVY WEIGHT  
FULL MORTISE REVERSE  
SAFETY STUD TEMPLATE HINGES  
ELECTRIC THROUGH WIRE TYPE ETW  
SIZES: 114.30 x 114.30

Template No. T554M

No.	REVISION	BY	DATE
1	ECO CT05035	RAM	8-15-05
2	ECO CT04044	MRJ	6-20-08
3	ECO CT08039	DW	11.10.08
4	ADDED LH	SLJ	05.28.09
5			

LEFT HAND

RIGHT HAND



-DO NOT SCALE-

DRILLING INSTRUCTIONS

NOTE A:

DRILL AND DEBURR  $\phi$  25.40 HOLE IN FRAME REINFORCEMENT FOR THROUGH WIRES.

NOTE B:

DRILL AND DEBURR  $\phi$  19.05 HOLE IN DOOR REINFORCEMENT FOR THROUGH WIRES.

NOTE C:

DRILL  $\phi$  15.88 HOLES IN DOOR AND FRAME REINFORCEMENT FOR STUDS.

CATALOG NUMBER	METAL GAUGE	(E) KNUCKLE DIAMETER	(F) DISTANCE FROM EDGE OF LEAF TO SWAGE LINE
STAINLESS STEEL HINGES			114.30 x 114.30
HB953RSS-ETW	4.75	22.23	46.04

ALL DIMENSIONS ARE IN MILLIMETERS.

Machine Screw Size- 1/4-20 x 1/2" F.H.



NOTE: This hinge is intended to be used in the center position. Hospital type template hinges conform to the above screw size and location. They are designated by "HT" to catalog number. Hager template hinges are made in size and with screw holes located to conform to ANSI-A156.7.

HAGER RESERVES THE RIGHT TO MAKE DESIGN CHANGES WITHOUT NOTICE. CALL HAGER ENGINEERING AT 1-800-325-9995 FOR LATEST REVISION DATE OF TEMPLATE.

HAGER COMPANIES  
139 VICTOR STREET  
P.O. BOX 12300  
ST. LOUIS, MISSOURI 63157-0300