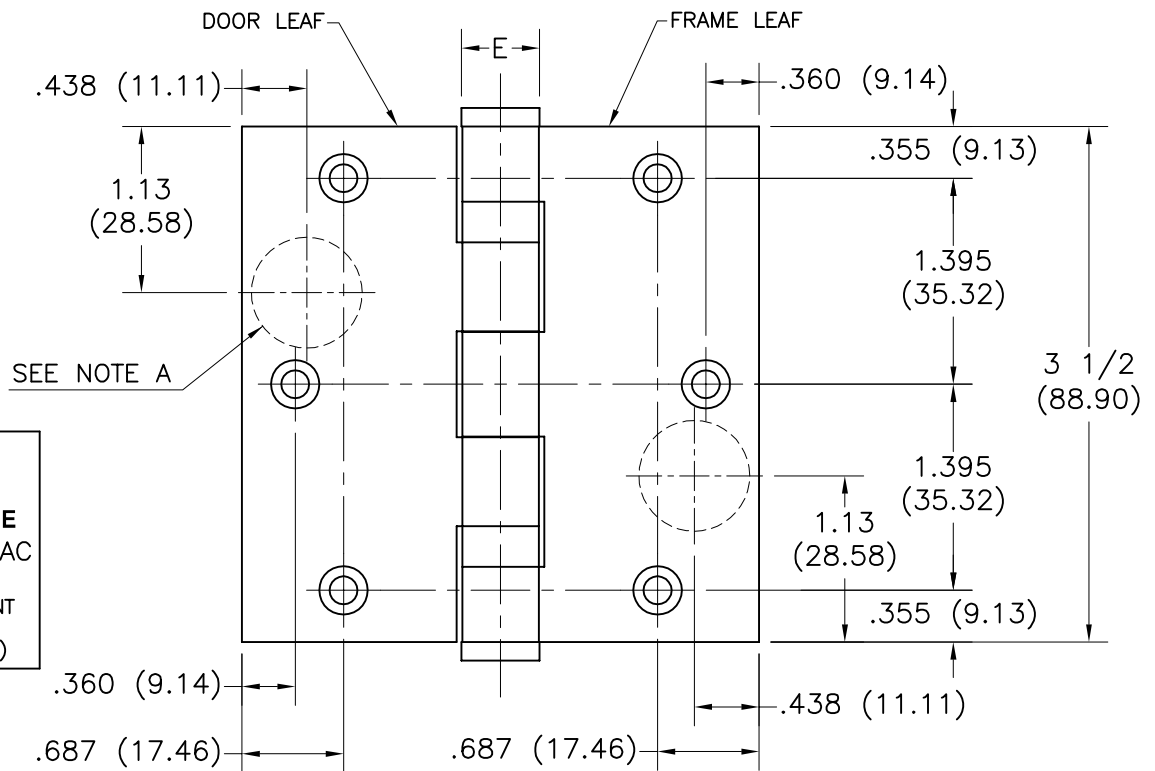


**FULL MORTISE
TEMPLATE HINGES ELECTRIC
THROUGH WIRE TYPE ETW**

Template No. T627
Rev. 1 9-5-00

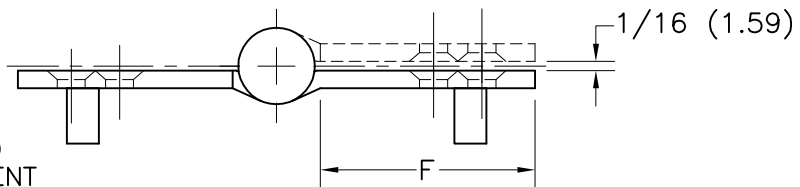
SIZE: 3 1/2 x 3 1/2
(88.90 x 88.90)



**ETW MAXIMUM
ELECTRICAL RATING
CONTACT THROUGH WIRE**
VOLTS 48V DC/AC
AMPERES
3.5A CONTINUOUS CURRENT
16.0A CURRENT INRUSH
(300 MILLISECONDS)

DRILLING INSTRUCTIONS

NOTE A:
DRILL AND DEBURR ϕ 3/4 (19.05)
HOLES (2) IN FRAME REINFORCEMENT
AND IN DOOR REINFORCEMENT
FOR THROUGH WIRES.



-DO NOT SCALE-

CATALOG NUMBER		METAL GAUGE	(E) KNUCKLE DIAMETER	(F) DISTANCE FROM EDGE OF LEAF TO SWAGE LINE
STEEL HINGES	NON- FERROUS HINGES			3 1/2 x 3 1/2 (88.90 x 88.90)
BB1279-ETW	BB1191-ETW	.119(3.02)	33/64 (13.16)	1 29/64 (36.91)

ALL NON-BRACKETED DIMENSIONS ARE IN INCHES, ALL BRACKETED DIMENSIONS ARE IN MILLIMETERS.

Machine Screw Size- 10-24 x 1/2" F.H.
Wood Screw Size- No. 9 x 1" F.H.



NOTE: This hinge is intended to be used in the center position.

Hospital type and round corner template hinges conform to the above screw size and location. They are designated by "HT" and "RC" to catalog number. Hager template hinges are made in size, gauge and with screw holes located to conform to ANSI-A156.7.

HAGER RESERVES THE RIGHT TO MAKE
DESIGN CHANGES WITHOUT NOTICE. CALL
HAGER ENGINEERING AT 1-800-325-9995
FOR LATEST REVISION DATE OF TEMPLATE.

HAGER COMPANIES

139 VICTOR STREET
P.O. BOX 12300
ST. LOUIS, MISSOURI 63157-0300

Template No. T627