

WTBB1279

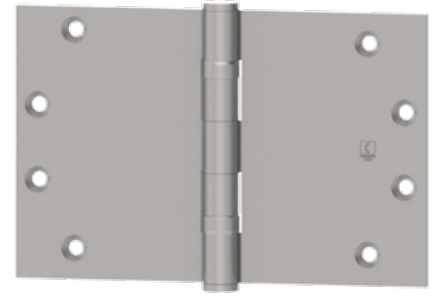
Five Knuckle
Ball Bearing
Standard Weight - Wide Throw

Application:

- ANSI A8112 (Steel)
- Two ball bearings
- Non-rising removable pin with button tip and plug
- For use on medium weight doors or doors requiring medium frequency service
- Hinge testing conforms to ANSI 156.1
- Furnished with screw hole locations that conform to standards approved by ANSI A156.7

Electric Modifications:

- [EMN](#) (Electric Monitor Only)
- [ETW](#) (Electric Through-Wire Only)
- [ETM](#) (Electric Through-Wire with Monitoring)
- [Quick Connect](#)



PRODUCT SPECIFICATIONS

MATERIAL:

- Steel with Steel pin

FINISHES:

- LS, USP, US3, US10, US10A, US10B, US26, US26D

NOTES:

- Hinge testing conforms to ANSI 156.1
- Furnished with screw hole locations that conform to standards approved by ANSI A156.7

PRODUCT SIZE OPTIONS

HINGE SIZE (INCHES)	HINGE SIZE (MM)	GAUGE OF METAL	HOLE COUNT	SCREW SIZE (MACHINE)	SCREW SIZE (WOOD)
3-1/2 x 5	89 x 127	0.119	6	1/2 x 10-24	1 x 9
3-1/2 x 6	89 x 152	0.119	6	1/2 x 10-24	1 x 9
4 x 5	102 x 127	0.129	8	1/2 x 12-24	1-1/4 x 12
4 x 6	102 x 152	0.129	8	1/2 x 12-24	1-1/4 x 12
4 x 7	102 x 178	0.129	8	1/2 x 12-24	1-1/4 x 12
4-1/2 x 5	114 x 127	0.134	8	1/2 x 12-24	1-1/4 x 12
4-1/2 x 6	114 x 152	0.134	8	1/2 x 12-24	1-1/4 x 12
4-1/2 x 7	114 x 178	0.134	8	1/2 x 12-24	1-1/4 x 12
4-1/2 x 8	114 x 203	0.134	8	1/2 x 12-24	1-1/4 x 12
5 x 6	127 x 152	0.145	8	1/2 x 12-24	1-1/4 x 12
5 x 7	127 x 178	0.145	8	1/2 x 12-24	1-1/4 x 12
5 x 8	127 x 203	0.145	8	1/2 x 12-24	1-1/4 x 12