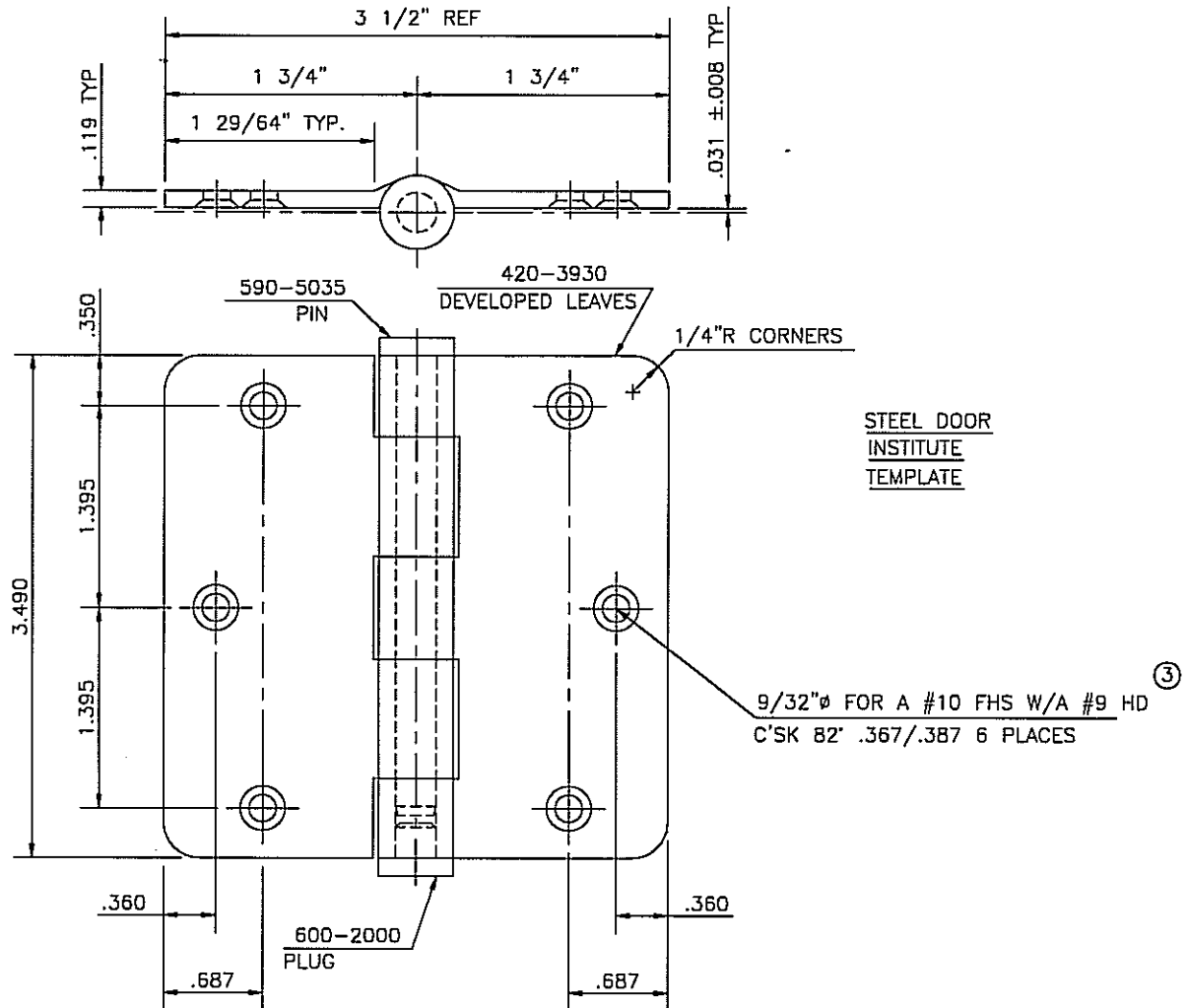


THIS IS NOT A TEMPLATE AND SHOULD NOT BE USED FOR DOOR PREP.




STEEL DOOR
INSTITUTE
TEMPLATE

9/32"φ FOR A #10 FHS W/A #9 HD
C'SK 82' .367/.387 6 PLACES ③

MANUFACTURING CANNOT BEGIN WITHOUT SIGNATURE ON OUR DRAWING
DO NOT SCALE DRAWING. TOLERANCES: FRACTIONS ±1/64", DECIMALS ±.005, ANGLES ±1' EXCEPT AS NOTED.

CUSTOMER APPROVAL _____ DATE _____

HAGER COMPANIES				
HAGER COMPANIES ST. LOUIS, MO				
MATERIAL STEEL	FINISH AS SPECIFIED <input checked="" type="checkbox"/>	TYPE CR COMM	POLISH AS REQUIRED <input checked="" type="checkbox"/>	
TYPE - PIN CR STEEL FLAT BUTTON TIP PACKAGE INSTRUCTIONS OR USED ON ASSEMBLY NUMBER				
NO.	REVISIONS	BY	DATE	
1	FOR COMPUTER	RDN	8-16-99	
2	ECO CT04001	RAM	1-31-05	
3	ECO CT07027	SLJ	06.13.08	
4				
5				
6				
7				
DESCRIPTION				
STEEL, PLAIN BEARING, STD. WT., ROUND COR., FULL MORTISE HINGE				
DRAWING NO.	QTY.	DESCRIPTION		
420-3930	1	DEV. LEAVES		
590-5035	1	PIN		
600-2000	1	PLUG		
MATERIAL DATA	GAUGE	WIDTH	PROGRESSION	WEIGHT
SCALE	APPV'D BY	DRAWN BY	DATE	
1/1		RDN	8-11-99	
DRAWING NO.	REV.			
3 1/2" x 3 1/2"	1279R			3
J:\1279R\35350SDI				
 HAGER COMPANIES 139 Victor St. St. Louis, MO 63104				