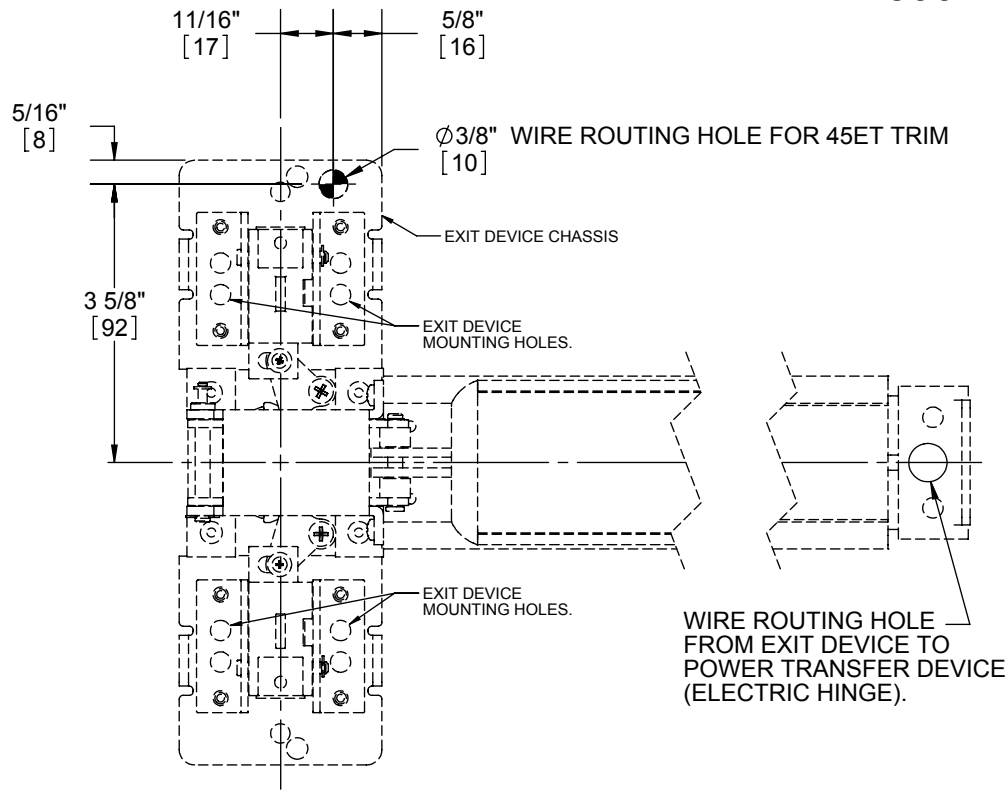
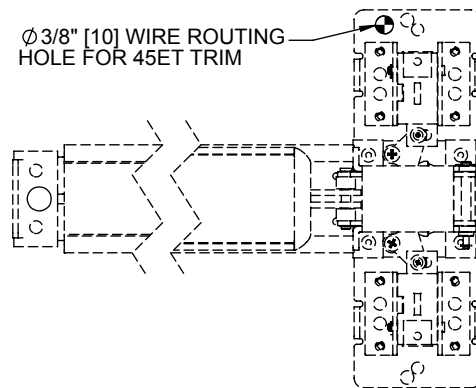


4500 HEAD CHASSIS WIRE ROUTING INSTRUCTIONS FOR USE WITH 45ET ELECTRIC TRIM



LHR (LEFT HAND REVERSE) DOOR SHOWN ABOVE



RHR (RIGHT HAND REVERSE) DOOR SHOWN ABOVE
(SAME DIMENSIONS AS LHR)

INSTRUCTIONS:

NOTE: THIS IS A SUPPLEMENTAL INSTRUCTION FOR ADDING A WIRE ROUTING HOLE TO THE SVR EXIT DEVICE CHASSIS WHEN USING THE 45ET ELECTRIC TRIM WITH A 4500 SERIES EXIT DEVICE.

1. DETERMINE DOOR HANDING OF EXIT DEVICE AND IDENTIFY LOCATION FOR WIRE ROUTING HOLE (SEE LHR OR RHR LAYOUT DIAGRAMS).
2. DRILL A $\phi 3/8"$ [10mm] HOLE THROUGH THE CHASSIS USING THE DIMENSIONS SHOWN.
3. ONLY ONE HOLE IS REQUIRED ON THE TOP SIDE OF THE EXIT DEVICE TO ROUTE WIRES FROM THE 45ET ELECTRIC TRIM THROUGH THE 4500 SERIES EXIT DEVICE.
4. THIS HOLE WILL LINE UP WITH THE WIRE ROUTING HOLE IN THE DOOR, WHICH IS DESCRIBED IN THE 45ET TRIM INSTRUCTIONS. SEE REFERENCE DOCUMENTS LISTED BELOW.
5. ONCE THE $\phi 3/8"$ [10mm] HOLE HAS BEEN DRILLED INTO THE EXIT DEVICE CHASSIS, USE THE REFERENCED DOCUMENTS LISTED BELOW FOR INSTRUCTIONS ON MOUNTING THE TRIM AND EXIT DEVICE AND ROUTING THE WIRES.

REFERENCE DOCUMENTS:

- I-ED00367 4500 SERIES ELECTRIC EXIT DEVICES
WIRE ROUTING AND DOOR PREP INSTRUCTIONS
- I-ED00370 4500 SERIES ELECTRIC LEVER TRIM
ELECTRICAL SUPPLEMENTAL INSTRUCTIONS
- T-ED00372 4500 ELECTRIC TRIM TEMPLATE

