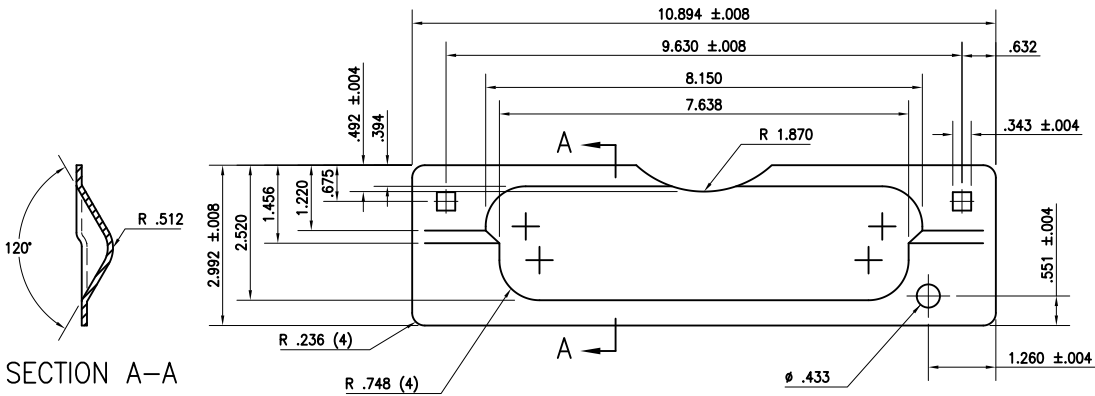
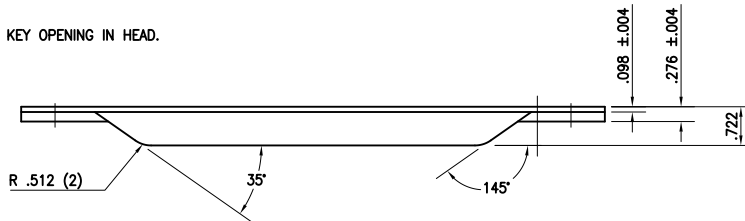


THIS IS NOT A TEMPLATE AND SHOULD NOT BE USED FOR DOOR PREP.

②
PROVIDE THE FOLLOWING:

- 2 EACH 5/16-18 x 1 1/2" CARRIAGE BOLTS.
- 2 EACH 5/16-18 x 3/4" SEX NUTS W/ 3/16" ALLEN KEY OPENING IN HEAD.



SECTION A-A

DO NOT SCALE DRAWING. TOLERANCES: FRACTIONS ±1/64", DECIMALS .XX=±.03, .XXX=±.010", ANGLES ±1' EXCEPT AS NOTED.

HAGER COMPANIES

**PURCHASED
GOODS**

VENDOR INFORMATION:

DESCRIPTION:
LATCH GUARD
3" x 1 1/2"
W/ CUT OUT

SPECIFICATIONS:

MATERIAL: SS STEEL
TYPE: 304 CRS
FINISH(S): 2C, DURO & USP

FASTENERS:

PACKAGING INSTRUCTIONS

NO.	REVISIONS	BY	DATE
1	FOR COMPUTER	MJS	12-17-96
2	PER ECO 01-MG021	RAM	4-11-01
3	ADD STEEL MATL	RAM	2-11-05
4			
5			
6			
7			

SCALE	APP'D BY	DRAWN BY	DATE
1/2	KDK	MJS	12-17-96

DRAWING NO.	REV.
341D J:\341D	3

HAGER COMPANIES
139 Victor St.
St. Louis, MO 63104