

**TRICON - FULL MORTISE  
TEMPLATE HINGES  
ELECTRIC THROUGH WIRE  
AND MONITOR TYPE ETM**

Template No. T 524M  
Rev. '96



SIZES: 114.30 x 101.60, 114.30 x 114.30

ETM MAXIMUM ELECTRICAL RATING SWITCH
VOLTS 48V DC/AC
AMPERES 1.0A
CONTACT THROUGH WIRE
VOLTS 48V DC/AC
AMPERES
3.5A CONTINUOUS CURRENT
16.0A CURRENT INRUSH
(300 MILLISECONDS)

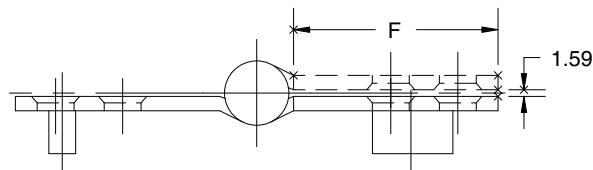
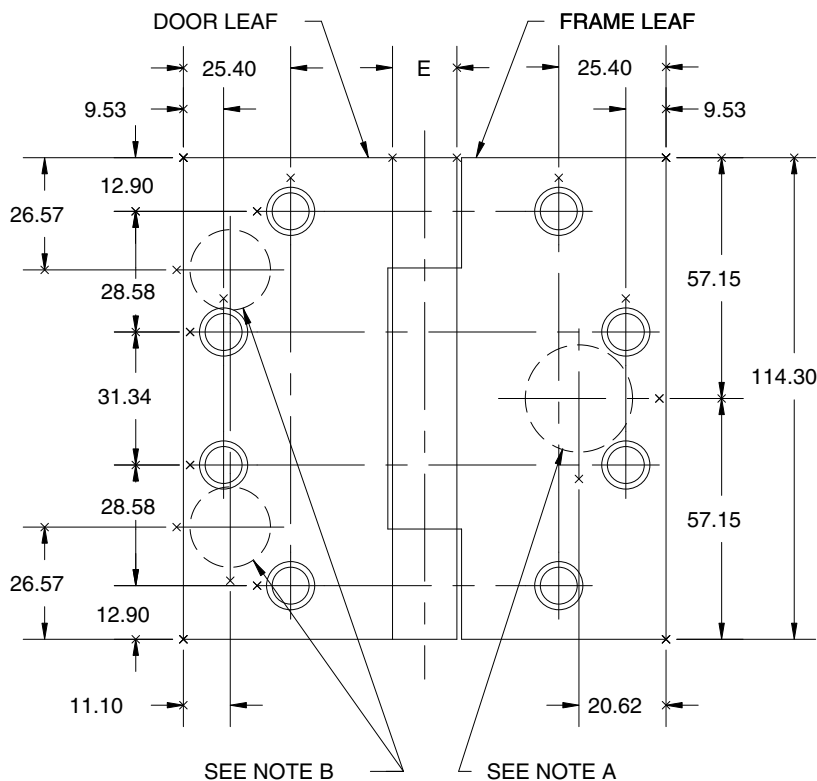
**DRILLING INSTRUCTIONS**

**NOTE A:**

DRILL AND DEBURR  $\phi$  25.40 mm HOLE IN FRAME REINFORCEMENT FOR THROUGH WIRES.

**NOTE B:**

- NON-HANDED INSTALLATION- DRILL AND DEBURR TWO (2)  $\phi$  19.05 mm HOLES IN DOOR REINFORCEMENT PLATE FOR THROUGH WIRES.
- RIGHT HAND INSTALLATION- DRILL AND DEBURR  $\phi$  19.05 mm HOLE FOR THROUGH WIRES IN DOOR REINFORCEMENT PLATE ON BOTTOM LEFT.
- LEFT HAND INSTALLATION- DRILL AND DEBURR  $\phi$  19.05 mm HOLE FOR THROUGH WIRES IN DOOR REINFORCEMENT PLATE ON UPPER RIGHT.



-DO NOT SCALE-

CATALOG NUMBER		METAL GAUGE	(E) KNUCKLE DIAMETER	(F) DISTANCE FROM EDGE OF LEAF TO SWAGE LINE	
STEEL HINGES	NON-FERROUS HINGES			114.30 x 101.60	114.30 x 114.30
AB700-ETM	AB800-ETM	3.40	15.48	41.28	47.63
AB750-ETM	AB850-ETM	4.57	17.86	39.69	46.04

ALL DIMENSIONS ARE IN MILLIMETERS.

Machine Screw Size- 12-24 x 1/2" F.H.

Wood Screw Size- No. 12 x 1 1/4" F.H.



NOTE: This hinge is intended to be used in the center position.

Hospital type and round corner template hinges conform to the above screw size and location. They are designated by "HT" and "RC" to catalog number.

Hager template hinges are made in size, gauge and with screw holes located to conform to ANSI-A156.7.

HAGER RESERVES THE RIGHT TO MAKE DESIGN CHANGES WITHOUT NOTICE. CALL HAGER ENGINEERING AT 1-800-325-9995 FOR LATEST REVISION DATE OF TEMPLATE.

**HAGER COMPANIES**  
139 VICTOR STREET  
P.O. BOX 12300  
ST. LOUIS, MISSOURI 63157-0300

Template No. T 524M