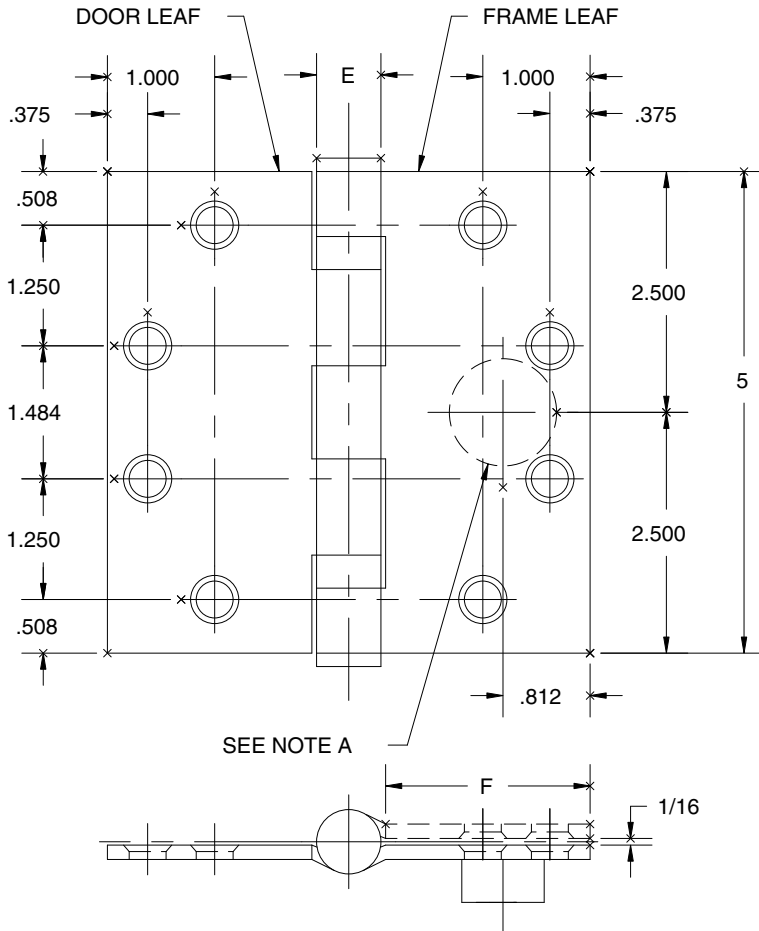


**FULL MORTISE  
TEMPLATE HINGES  
ELECTRIC MONITOR TYPE EMN**

Template No. T 525  
Rev. '96

SIZES: 5 x 4, 5 x 4 1/2, 5 x 5



EMN MAXIMUM  
ELECTRICAL RATING  
SWITCH  
VOLTS 48V DC/AC  
AMPERES 1.0A

**DRILLING INSTRUCTIONS**

NOTE A:  
DRILL AND DEBURR  $\phi$  1"  
HOLE IN FRAME REINFORCEMENT  
FOR WIRES.

-DO NOT SCALE-

CATALOG NUMBER		METAL GAUGE	(E) KNUCKLE DIAMETER	(F) DISTANCE FROM EDGE OF LEAF TO SWAGE LINE		
STEEL HINGES	NON-FERROUS HINGES			5 x 4	5 x 4 1/2	5 x 5
BB1279-EMN	BB1191-EMN	.145	41/64	1 5/8	1 7/8	2 1/8
AB700-EMN	AB800-EMN	.145	5/8	1 5/8	1 7/8	2 1/8
BB1168-EMN	BB1199-EMN	.190	47/64	1 9/16	1 13/16	2 1/16
AB750-EMN	AB850-EMN	.190	47/64	1 9/16	1 13/16	2 1/16

ALL DIMENSIONS ARE IN INCHES.

Machine Screw Size- 12-24 x 1/2" F.H.  
Wood Screw Size- No. 12 x 1 1/4" F.H.



NOTE: This hinge is intended to be used in the center position.

Hospital type and round corner template hinges conform to the above screw size and location. They are designated by "HT" and "RC" to catalog number.

Hager template hinges are made in size, gauge and with screw holes located to conform to ANSI-A156.7.

HAGER RESERVES THE RIGHT TO MAKE DESIGN CHANGES WITHOUT NOTICE. CALL HAGER ENGINEERING AT 1-800-325-9995 FOR LATEST REVISION DATE OF TEMPLATE.

**HAGER COMPANIES**  
139 VICTOR STREET  
P.O. BOX 12300  
ST. LOUIS, MISSOURI 63157-0300

Template No. T 525