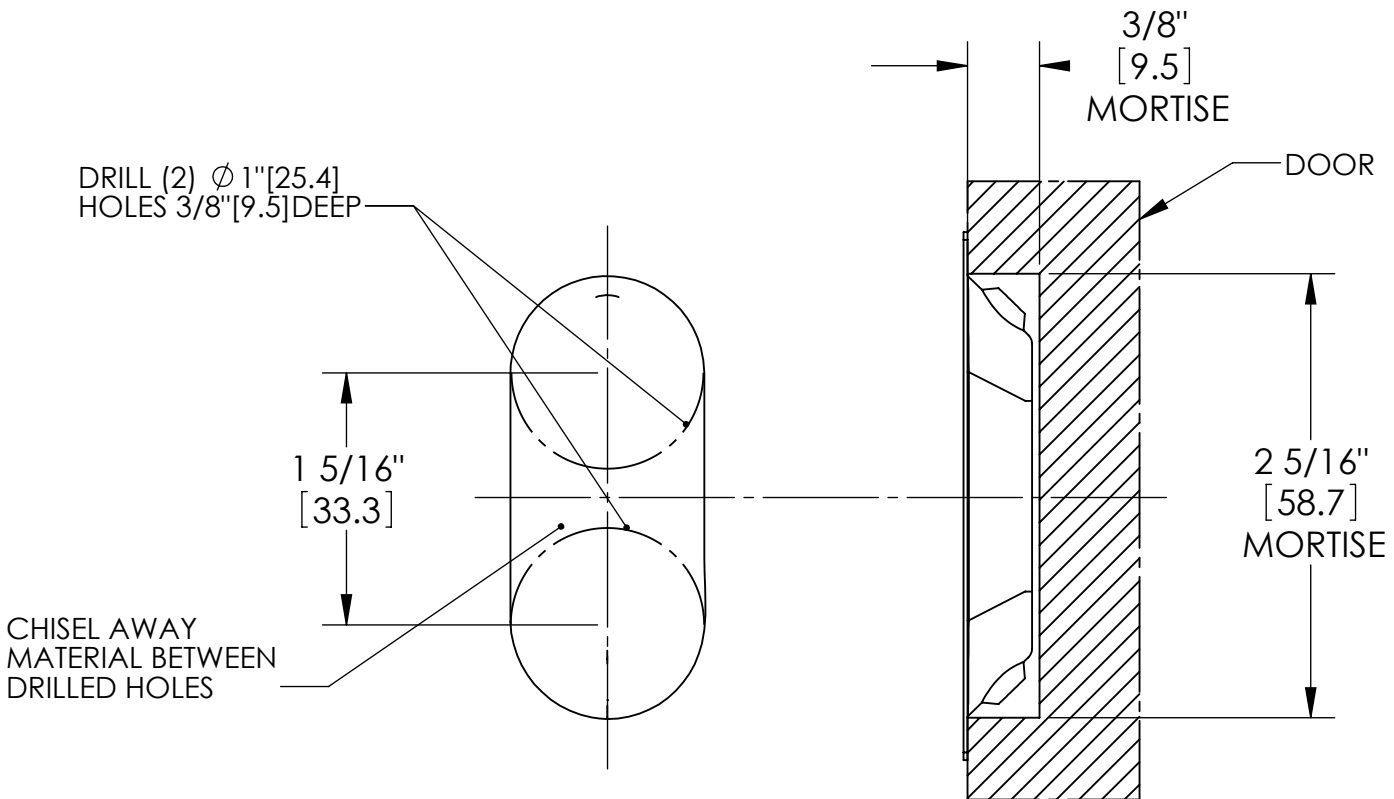
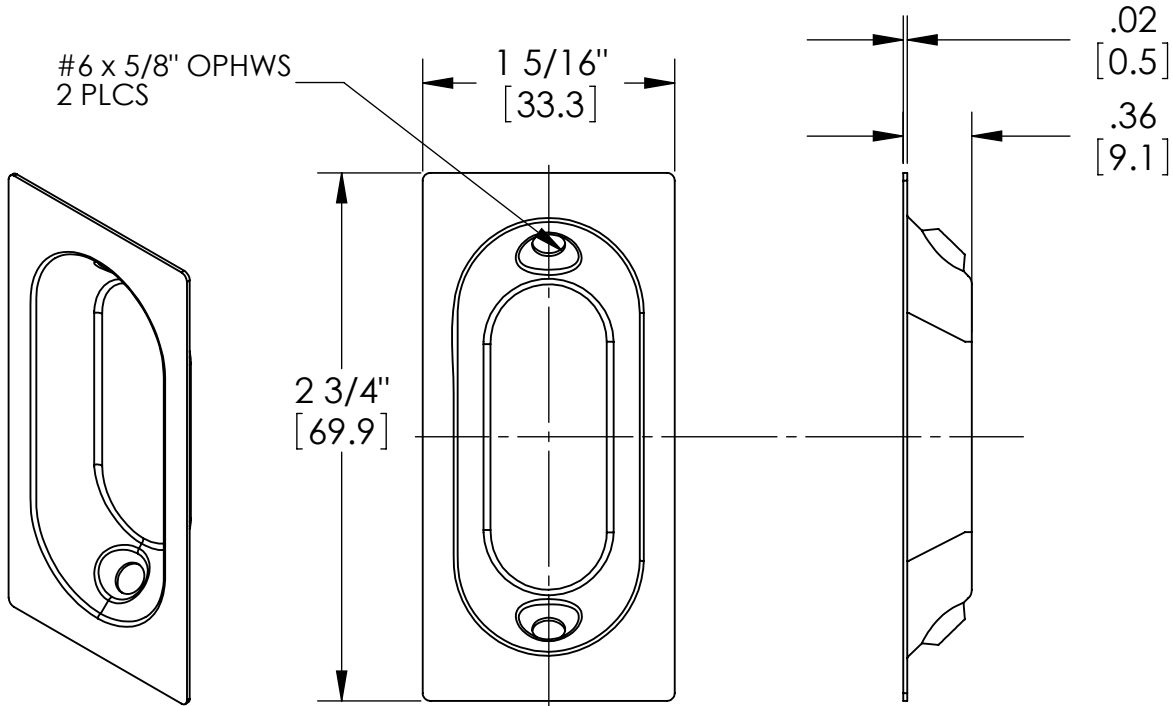


REVISIONS			
REV.	DESCRIPTION	DATE	APPROVED
01	ADDED DOOR PREP INFO	10/13/2008	



1. USE TEMPLATE DIMENSIONS ABOVE TO MAKE CUTOUT FOR PULL. (DO NOT SCALE TEMPLATE)
2. DRILL (2) ϕ 1" [25.4] HOLES 3/8" [9.5] DEEP.
3. CHISEL AWAY MATERIAL LEFT IN CENTER OF (2) DRILLED HOLES TO A DEPTH OF 3/8" [9.5].
4. INSERT PULL & MAKE SURE LIP SITS FLUSH WITH FACE OF DOOR.
5. MARK & DRILL (2) ϕ 3/32" [2.4] PILOT HOLES AT A 45° ANGLE IN CORNERS OF CUTOUT.
6. SECURE PULL TO THE DOOR USING SCREWS SUPPLIED.



PROPRIETARY & CONFIDENTIAL
 THE INFORMATION CONTAINED
 IN THIS DRAWING IS THE SOLE
 PROPERTY OF HAGER
 COMPANIES. ANY REPRODUCTION
 IN PART OR AS A WHOLE WITHOUT
 THE WRITTEN PERMISSION OF
 HAGER COMPANIES IS PROHIBITED.

HAGER RESERVES
 THE RIGHT TO
 MAKE DESIGN
 CHANGES
 WITHOUT NOTICE.
 CALL HAGER
 ENGINEERING AT
 1-800-325-9995
 FOR THE LATEST
 REVISION DATE
 OF TEMPLATE.

DRAWN	DMH	3/2/2006
ENG. APPR.		
MATERIAL	Brass	Q.A.
FINISH	N/A	TOLERANCES: FRACTIONAL: ± 0.015 " ANGULAR: MACH: $\pm 1^\circ$ BEND: $\pm 1^\circ$ TWO PLACE DECIMAL: ± 0.01 " THREE PLACE DECIMAL: ± 0.004 "
DO NOT SCALE DRAWING		

2640 OBLONG DOOR PULL		REV. 01
SIZE A	DWG. NO. T-TA00105	
SCALE: 1:1	WEIGHT: 0.03	SHEET 1 OF 1