

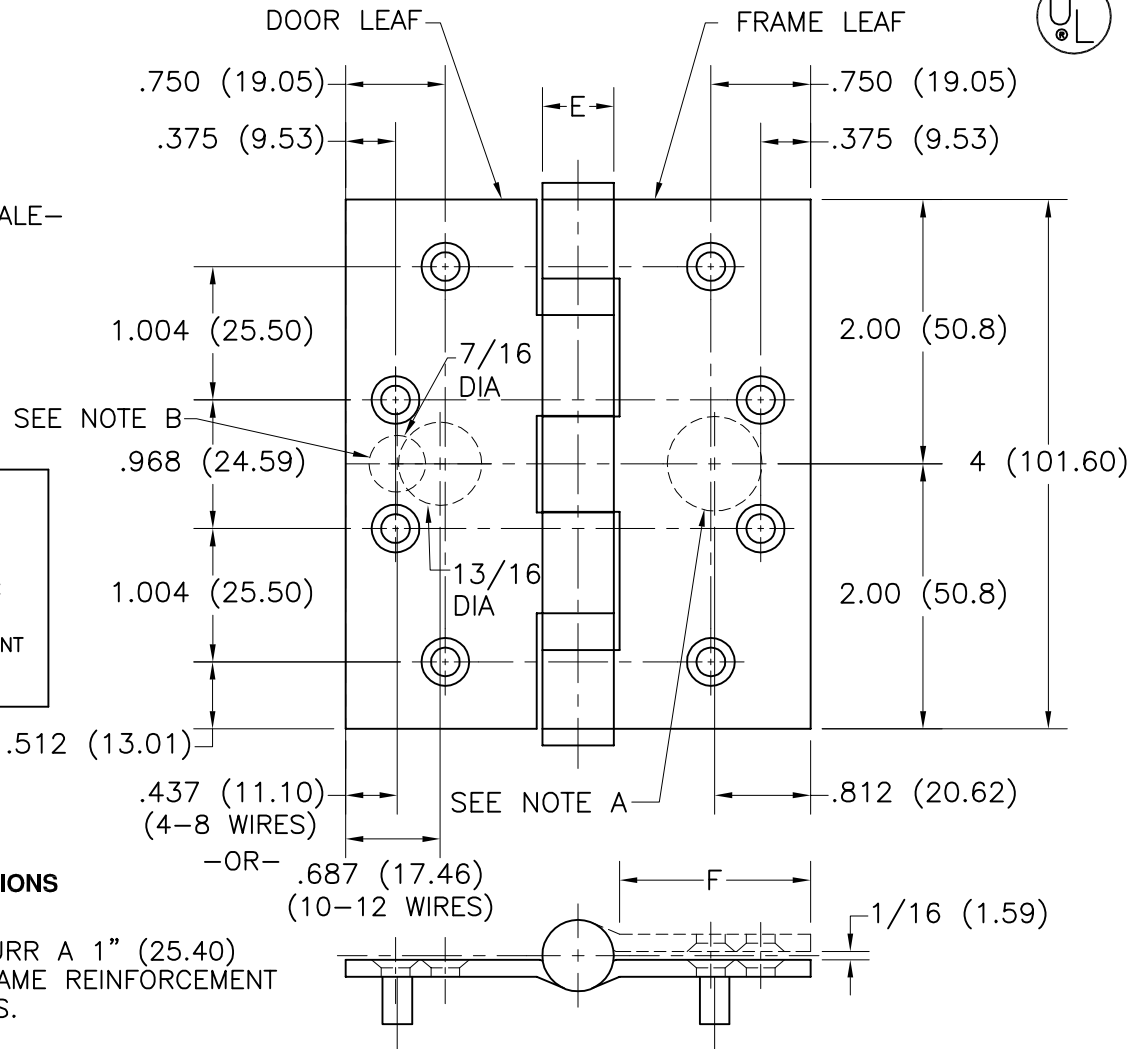
FULL MORTISE
 TEMPLATE HINGES ELECTRIC
 THRU WIRE TYPE ETW
 SIZE: 4 x 3 1/2
 (101.60 x 88.90)

Template No. T636

No.	REVISION	BY	DATE
1	ECO CT05035	RAM	8-16-05
2	ECO CT07016	DW	4.12.07



-DO NOT SCALE-



ETW MAXIMUM ELECTRICAL RATING CONTACT THRU WIRE
 VOLTS: 48V DC
 AMPERES:
 3.5A CONTINUOUS CURRENT
 16.0A CURRENT INRUSH
 (300 MILLISECONDS)

DRILLING INSTRUCTIONS

NOTE A:
 DRILL AND DEBURR A 1" (25.40) DIA HOLE IN FRAME REINFORCEMENT FOR THRU WIRES.

NOTE B:
 DRILL AND DEBURR A 7/16" (11.10) DIA HOLE FOR 4-8 THRU WIRES -OR- A 13/16" (20.64) DIA HOLE FOR 10-12 THRU WIRES IN DOOR REINFORCEMENT.

CATALOG NUMBER	METAL GAUGE	(E) KNUCKLE DIAMETER	(F) DISTANCE FROM EDGE OF LEAF TO SWAGE LINE
NON-FERROUS HINGES			4 x 3 1/2 (101.60 x 88.90)
BB6191-ETW	.119(3.02)	17/32 (13.67)	1 7/16 (36.53)

ALL NON-BRACKETED DIMENSIONS ARE IN INCHES, ALL BRACKETED DIMENSIONS ARE IN MILLIMETERS.

Machine Screw Size- 10-24 x 1/2" F.H.
 Wood Screw Size- No. 10 x 1 1/4" F.H.

NOTE: This hinge is intended to be used in the center position.

Hospital type and round corner template hinges conform to the above screw size and location. They are designated by "HT" and "RC" to catalog number. Hager template hinges are made in size, gauge and with screw holes located to conform to ANSI-A156.7.



HAGER RESERVES THE RIGHT TO MAKE DESIGN CHANGES WITHOUT NOTICE. CALL HAGER ENGINEERING AT 1-800-325-9995 FOR LATEST REVISION DATE OF TEMPLATE.

HAGER COMPANIES
 139 VICTOR STREET
 P.O. BOX 12300
 ST. LOUIS, MISSOURI 63157-0300