

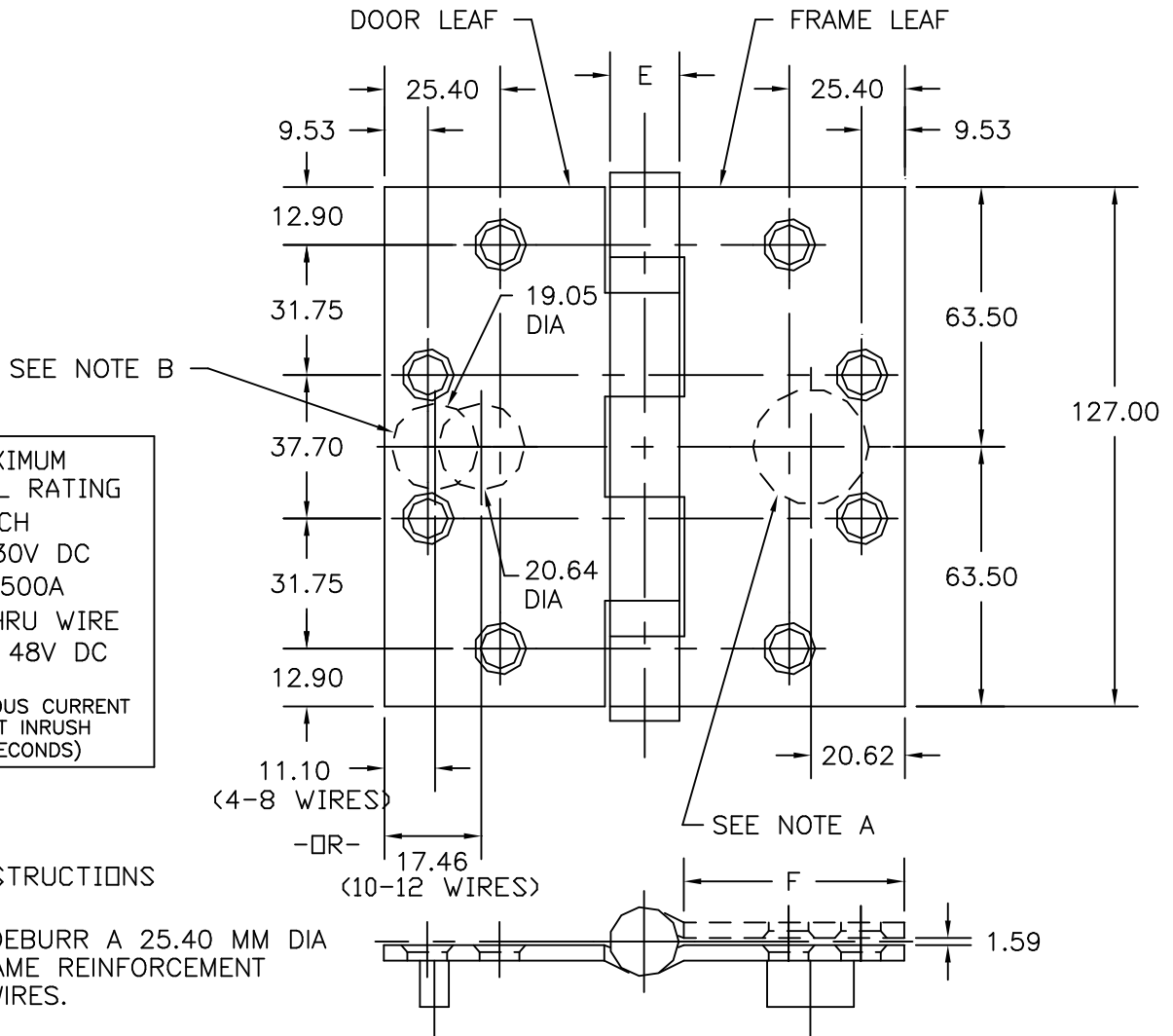


FULL MORTISE
TEMPLATE HINGES
ELECTRIC THRU WIRE
AND MONITOR TYPE ETM

Template No. T528M

No.	REVISION	BY	DATE
1	ECO CT05035	RAM	8-15-05
2	ECO CT07016	DW	4.12.07

SIZES: 127.00 x 101.60, 127.00 x 114.30, 127.00 x 127.00



ETM MAXIMUM
ELECTRICAL RATING
SWITCH
VOLTS: 30V DC
AMPERES: .500A
CONTACT THRU WIRE
VOLTS: 48V DC
AMPERES:
3.5A CONTINUOUS CURRENT
16.0A CURRENT INRUSH
(300 MILLISECONDS)

DRILLING INSTRUCTIONS

NOTE A:

DRILL AND DEBURR A 25.40 MM DIA HOLE IN FRAME REINFORCEMENT FOR THRU WIRES.

NOTE B:

DRILL AND DEBURR A 19.05 MM DIA HOLE FOR 4-8 THRU WIRES -OR- A 20.64 MM DIA HOLE FOR 10-12 THRU WIRES IN DOOR REINFORCEMENT.

-DO NOT SCALE-

CATALOG NUMBER		METAL GAUGE	(E) KNUCKLE DIAMETER	(F) DISTANCE FROM EDGE OF LEAF TO SWAGE LINE		
STEEL HINGES	NON-FERROUS HINGES			127.00 x 101.60	127.00 x 114.30	127.00 x 127.00
BB1279-ETM	BB1191-ETM	3.68	16.27	41.28	47.63	53.98
BB1168-ETM	BB1199-ETM	4.83	18.65	39.69	46.04	52.39

ALL DIMENSIONS ARE IN MILLIMETERS.

Machine Screw Size- 12-24 x 1/2" F.H.

Wood Screw Size- No. 12 x 1 1/4" F.H.

NOTE: This hinge is intended to be used in the center position.

Hospital type and round corner template hinges conform to the above screw size and location. They are designated by "HT" and "RC" to catalog number.

Hager template hinges are made in size, gauge and with screw holes located to conform to ANSI-A156.7.



HAGER RESERVES THE RIGHT TO MAKE DESIGN CHANGES WITHOUT NOTICE. CALL HAGER ENGINEERING AT 1-800-325-9995 FOR LATEST REVISION DATE OF TEMPLATE.

HAGER COMPANIES
139 VICTOR STREET
P.O. BOX 12300
ST. LOUIS, MISSOURI 63157-0300