

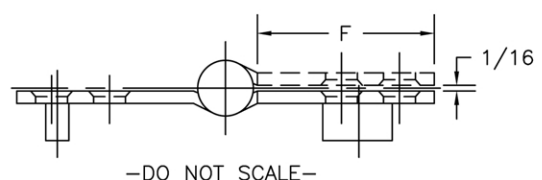
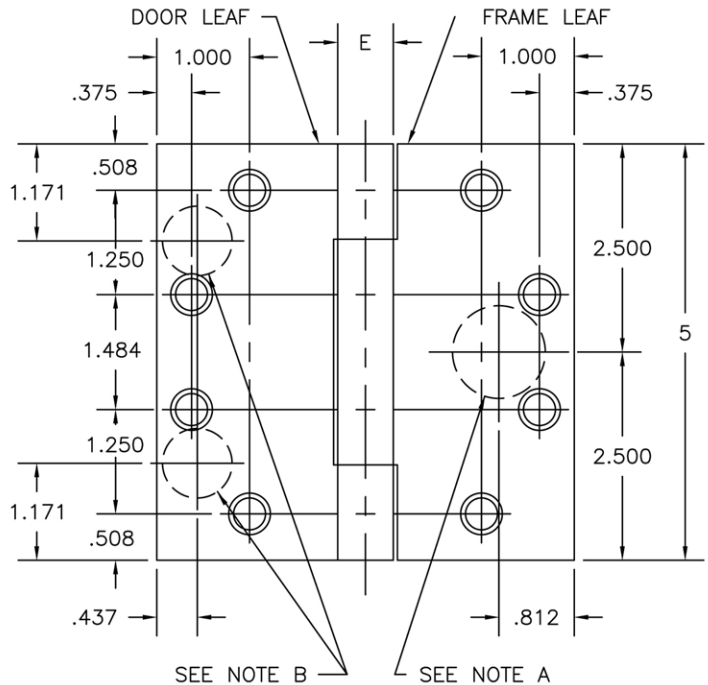


TRICON - FULL MORTISE
 TEMPLATE HINGES
 ELECTRIC THROUGH WIRE
 AND MONITOR TYPE ETM
 SIZES: 5 x 4, 5 x 4 1/2, 5 x 5

Template No. T529

No.	REVISION	BY	DATE
1	ECO CT05035	RAM	8-15-05

ETM MAXIMUM
 ELECTRICAL RATING
 SWITCH
 VOLTS 30V DC
 AMPERES .500A
 CONTACT THROUGH WIRE
 VOLTS 48V DC
 AMPERES
 3.5A CONTINUOUS CURRENT
 16.0A CURRENT INRUSH
 (300 MILLISECONDS)



DRILLING INSTRUCTIONS

NOTE A:
 DRILL AND DEBURR ϕ 1"
 HOLE IN FRAME REINFORCEMENT
 FOR THROUGH WIRES.

- NOTE B:
1. NON-HANDED INSTALLATION-
 DRILL AND DEBURR TWO
 (2) 3/4" HOLES IN DOOR
 REINFORCEMENT PLATE
 FOR THROUGH WIRES.
 2. RIGHT HAND INSTALLATION-
 DRILL AND DEBURR ϕ 3/4"
 HOLE FOR THROUGH WIRES
 IN DOOR REINFORCEMENT
 PLATE ON BOTTOM LEFT.
 3. LEFT HAND INSTALLATION-
 DRILL AND DEBURR ϕ 3/4"
 HOLE FOR THROUGH WIRES
 IN DOOR REINFORCEMENT
 PLATE ON UPPER RIGHT.

CATALOG NUMBER		METAL GAUGE	(E) KNUCKLE DIAMETER	(F) DISTANCE FROM EDGE OF LEAF TO SWAGE LINE		
STEEL HINGES	NON-FERROUS HINGES			5 x 4	5 x 4 1/2	5 x 5
AB700-ETM	AB800-ETM	.145	5/8	1 5/8	1 7/8	2 1/8
AB750-ETM	AB850-ETM	.190	47/64	1 9/16	1 13/16	2 1/16

ALL DIMENSIONS ARE IN INCHES.

Machine Screw Size- 12-24 x 1/2" F.H.
 Wood Screw Size- No. 12 x 1 1/4" F.H.

NOTE: This hinge is intended to be used in the center position.

Hospital type and round corner template hinges conform to the above screw size and location. They are designated by "HT" and "RC" to catalog number.

Hager template hinges are made in size, gauge and with screw holes located to conform to ANSI-A156.7.



HAGER RESERVES THE RIGHT TO MAKE
 DESIGN CHANGES WITHOUT NOTICE. CALL
 HAGER ENGINEERING AT 1-800-325-9995
 FOR LATEST REVISION DATE OF TEMPLATE.

HAGER COMPANIES
 139 VICTOR STREET
 P.O. BOX 12300
 ST. LOUIS, MISSOURI 63157-0300