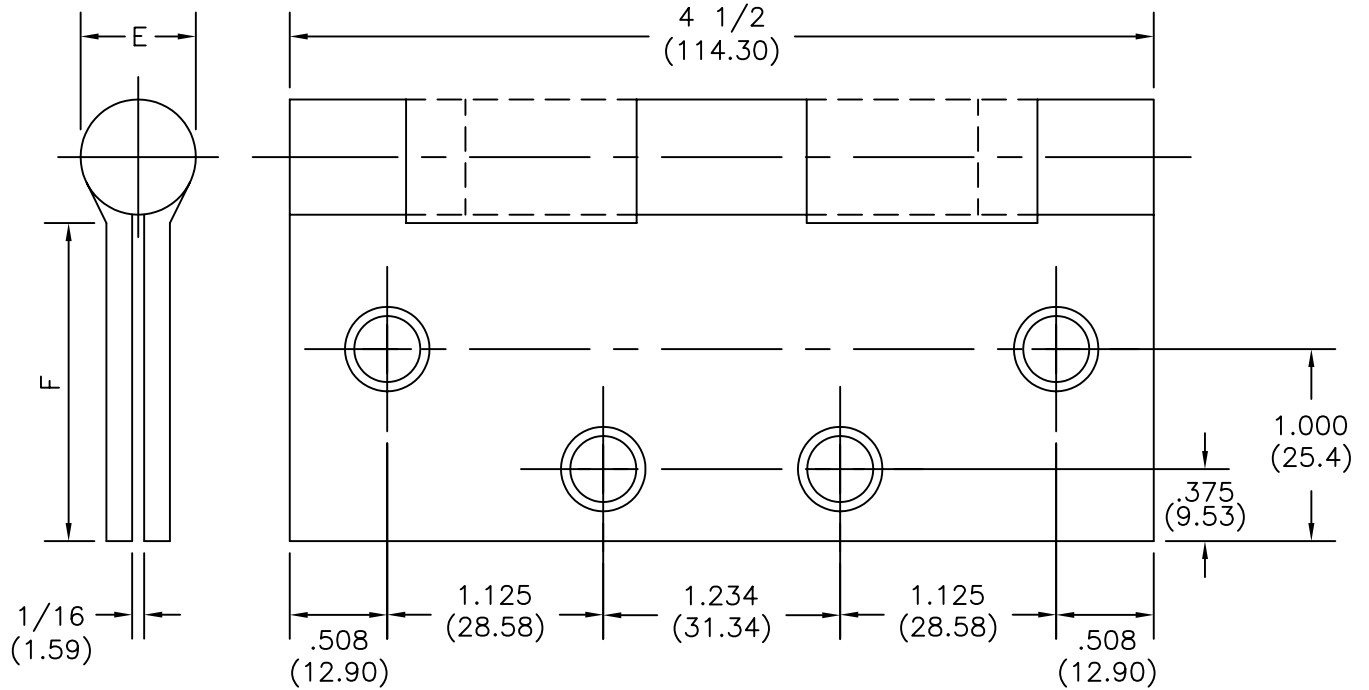


FULL MORTISE
TEMPLATE HINGE

SIZES: 4 1/2 x 4 1/2
(114.30 x 114.30)



-DO NOT SCALE-

| CATALOG NUMBER | | METAL GAUGE | (E) KNUCKLE DIAMETER | (F) DISTANCE FROM EDGE OF LEAF TO SWAGE LINE |
|----------------|--------------------|-------------|----------------------|----------------------------------------------|
| STEEL HINGES | NON-FERROUS HINGES | | | 4 1/2 x 4 1/2 (114.30 x 114.30) |
| ECBB1102 | ECBB1103 | .180 (4.57) | 45/64 (17.86) | 1 13/16 (46.04) |

ALL NON-BRACKETED DIMENSIONS ARE IN INCHES, ALL BRACKETED DIMENSIONS ARE IN MILLIMETERS.

Machine Screw Size- 12-24 x 1/2" F.H.
Wood Screw Size- No. 12 x 1 1/4" F.H.


HAGER COMPANIES
139 Victor St.
St. Louis, MO 63104
1-800-325-9995

HAGER RESERVES THE RIGHT TO MAKE
DESIGN CHANGES WITHOUT NOTICE.

DESCRIPTION:
ECCO HEAVY WEIGHT
FULL MORTISE TEMPLATE HINGE

| NO. | REVISION | BY | DATE |
|-----|-------------|----|----------|
| 1 | ECO CT05025 | DH | 01-23-06 |

PART NO.
T1102H